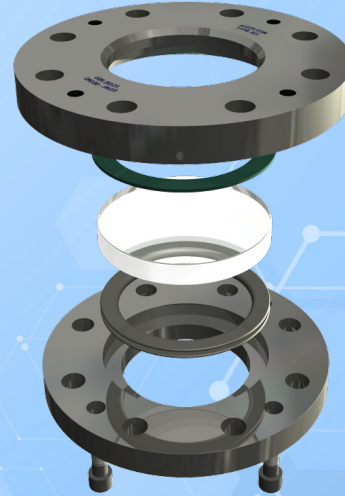
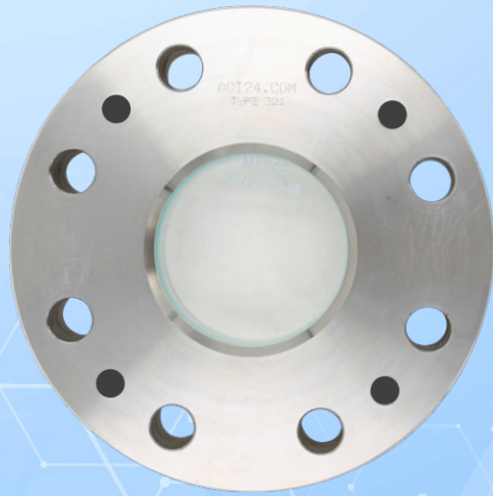


# Round sight glass fitting PN 10 / 25

Flange mounting according to DIN 28121

## Type 321



### APPLICATION:

Observation and illumination of the interior of closed vessels (boilers, tanks, silos, etc.). DIN 28121 Sightglasses are round flange sockets for mounting on flanges, each complete with a sightglass plate inserted between the gaskets and firmly screwed. The sealing is provided by a flexible seal, with the **force shunt** ensuring the necessary compression.

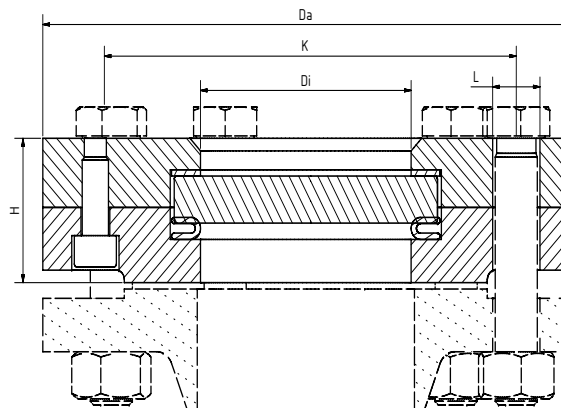
### INSTALLATION NOTE:

Gaskets suitable for the sealing surfaces should be used. The screw material should be equivalent to or higher than those of the sight glass body. Always use screws that match the hole pattern. If possible, the screw thread and the screw head should be lubricated.

According to DIN 28121  
( $\Delta P \leq 10 / 25$  bar)

### Operating conditions:

Temperature: (depending on glass and gasket)	200 °C <sup>1</sup>
Pressure:	≤ 10 / 25 Bar



### Materials:

Flange:	1.4571; 1.4541; 1.4404; 1.4306; 1.4435; 1.4539; 1.4462; P265GH; 2.4605
Glass:	Borosilicate glass DIN 7080
Gasket:	PTFE enclosed resilient gasket
Screws:	A4-80
Special materials on request	

DN	40	50	80	100	125	150	200
Di	48	65	80	100	125	125	150
H (PN10)	36	38	46	46	54	54	54
H (PN25)	38	41	50	59	66	66	66
Da	According to DIN EN 1092-1						
L							
K							

<sup>1</sup> limited by gasket; for higher temperatures alternative: Type 323



# Round sight glass fitting PN 10 / 25

Flange mounting according to DIN 28121

## Type 321

### PRODUCTCODE:

Group	TYPE	PN	DN	Base flange*	Glass	Gasket	Variant
11	321	1: 10 2: 25	40 50 80 100 125 150 200	1: 1.4571 2: 1.4541 3: 1.4404 4: 1.4539 5: 1.4306 6: 1.4435 7: 1.4462 8: P265GH 9: 2.4605 10: Special	1: Borosilicate glass (Boro) DIN 7080 2: Soda lime glass (SLG) DIN 8902 3: Quartz glass 4: Boro + PTFE wiper 5: Boro + silicone wiper 6: SLG + PTFE wiper 7: SLG + silicone wiper	1: PTFE	Assigned by ACI if required

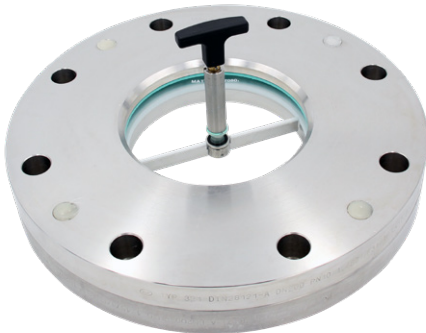
**INFO:** Unless otherwise stated, the factory standard highlighted is supplied.

### SPECIAL DESIGNS/OPTIONS:

- a) Wiper SWI or SWII with PTFE or silicone Wiper blade
  - b) Spray device SVII
  - c) LED or halogen lights, ATEX-certified, EX
  - d) High-temperature version (Type 323)
  - e) Vacuum version (Typ 324)<sup>2</sup>
  - f) FEP protective screen
- <sup>2</sup> depending on environmental variables

### EXAMPLE:

**11-321-1-100-1-1-1-0** equals the product code:  
 ACI Type 321  
 PN10  
 DN100  
 flanges 1.4571  
 borosilicate glass  
 PTFE enclosed resilient gasket  
 standard version



### RECOMMENDATION:

For aggressive media or steam, mica discs should be used to protect the glass.

Contact in Germany:  
 ACI Industriearmaturen GmbH  
 Tel. +49 (0) 2403 748 850  
 info@aci24.com • www.aci24.com

Contact in Poland:  
 Continental Trade Sp. z o.o.  
 office@continentaltrade.com.pl  
 http://continentaltrade.com.pl

20190916

Technical changes and errors reserved!