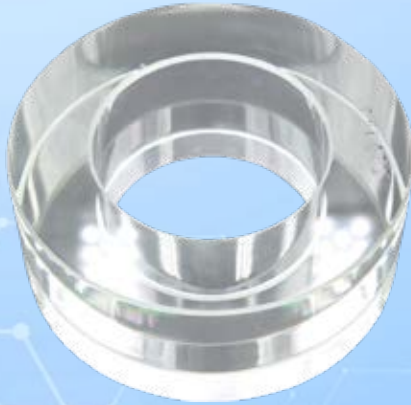




# Tubular sight glass CLASS 150

Intermediate flange version suitable for ASME 16.5 B

# Type 640A



### APPLICATION:

For observation of filling and flow in pipe-lines. The sight glass provides reliable 360° monitoring of the function and performance of individual devices as well as entire systems.

Tubular sight glasses type 640A are suitable for mounting between flanges according to ASME 16.5 B CLASS 150. The sight glass is free of dead space when mounted properly.

### INSTALLATION NOTE:

Gaskets suitable for the sealing surfaces should be used. The screw material should be equivalent to or higher than those of the sight glass body. If possible, the screw thread and the screw head should be lubricated. Tubular sight glasses must be installed in such a way to prevent pipe forces (tension, pressure and torsion), vibrations and pressure shocks from affecting the fitting!

Intermediate flange design for flanges acc. to ASME 16.5 B ( $\Delta P \leq 20$  bar)

### Operating conditions:

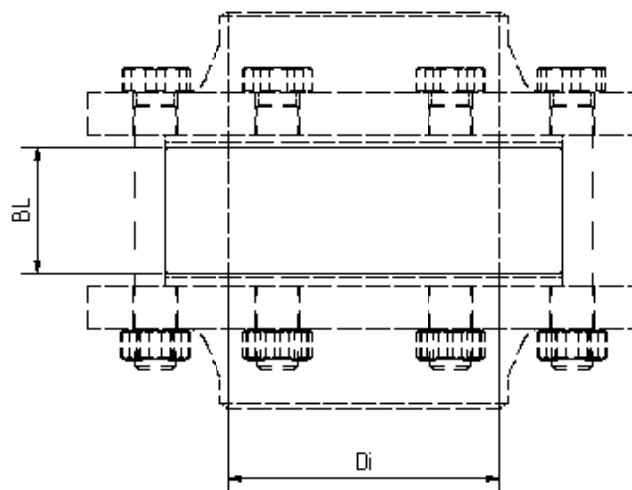
Temperature: 300 °C Borosilicate glass  
1000 °C Quartz glass  
(depending on glass and gasket)

Pressure:  $\leq 20$  Bar

### Materials:

Glass tube: Borosilicate glass  
Quartz glass

Special materials on request



NPS	3/8"	1/2"	3/4"	1"	1 1/4"	1 1/2"	2"	2 1/2"	3"	4"	5"	6"	8"	10"	12"
Di	14	16	21	27	35	41	53	63	78	102	128	154	203	255	305
L	50 mm														
PN <sup>2</sup>	20	20	20	20	20	20	20	20	20	20	20	20	16	16	10
² PN in combination with borosilicate glass								Other sizes, lengths and flange standards on request.							



# Tubular sight glass CLASS 150

Intermediate flange version suitable for ASME 16.5 B

# Type 640A

## PRODUCTCODE:

Group	TYPE	NPS	Glass tube	Overall length	Special options
11	640A	1: 3/8" 2: 1/2" 3: 3/4" 4: 1" 5: 1 1/4" 6: 1 1/2" 7: 2" 8: 2 1/2" 9: 3" 10: 4" 11: 5" 12: 6" 13: 8" 14: 10" 15: 12" 16: Special	<b>2: Borosilicate glass hardened</b> 3: Quartz glass 4: Borosilicate glass untempered 5: Sapphire glass 6: Special	000: Standard (50 mm)	Assigned by ACI on demand

**INFO:** Unless otherwise stated, the factory standard highlighted is supplied.

### SPECIAL DESIGNS/OPTIONS:

- a) DIN 1092-1 variant (Typ 640)
- c) incl. flanges, screws, nuts and gaskets
- d) Additional options on request

### EXAMPLE:

**11-640A-10-1-000-000** equals the product code:  
ACI Type 640A  
NPS 4"  
borosilicate glass  
standard length 50 mm

### ATTENTION!

The pressure-temperature limits according to ASME 16.5 B! apply!

Our tool of the same name is available on our website for this purpose.  
([www.ACI24.com](http://www.ACI24.com), in the category Service, Tools)



### HIGHER OPERATING PRESSURES:

In individual cases, higher operating pressures than those specified may be possible. Please contact us if necessary.

Kontakt w Niemczech  
ACI Industriearmaturen GmbH  
Tel. +49 (0) 2403 748 850  
[info@aci24.com](mailto:info@aci24.com) • [www.aci24.com](http://www.aci24.com)

Kontakt w Polsce:  
Continental Trade Sp. z o.o.  
tel. +48 22 670 11 81  
[office@continentaltrade.com.pl](mailto:office@continentaltrade.com.pl)  
<http://continentaltrade.com.pl>

20200210

Technical changes and errors reserved!