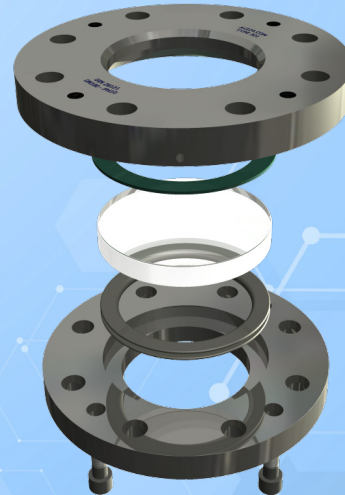
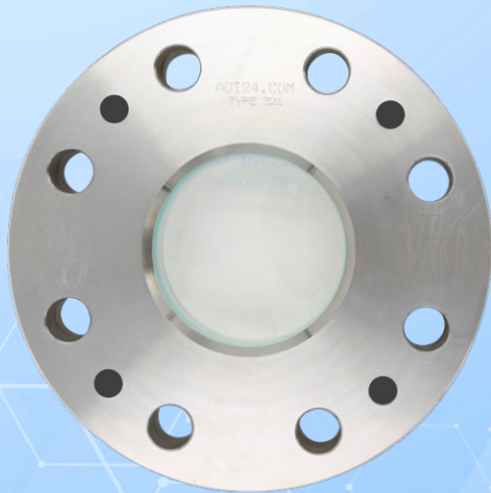




Round sight glass fitting CLASS 150 - 1500

ANSI / ASME flange mounting similar to DIN 28121

Type 321A



APPLICATION:

Observation and illumination of the interior of closed vessels (boilers, tanks, silos, etc.). Type 321A sight glasses are round flange fittings compatible with ANSI flanges from class 150 to 1500. They are sealed by a flexible gasket and the **force shunt** ensures the necessary compression.

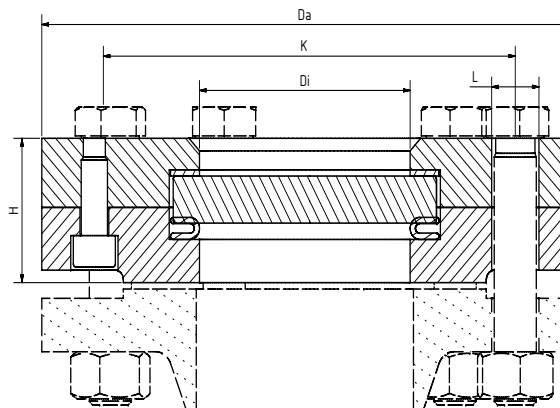
INSTALLATION NOTE:

Gaskets suitable for the sealing surfaces should be used. The screw material should be equivalent to or higher than those of the sight glass body. Always use screws that match the hole pattern. If possible, the screw thread and the screw head should be lubricated.

Similar to DIN 28120
($\Delta P \leq 20$ bar)

Operating conditions:

Temperature: (depending on glass and gasket)	200 °C ¹	
Pressure:	≤ 20	Bar



Materials:

Flange:	1.4571; 1.4541; 1.4404; 1.4306; 1.4435; 1.4539; 1.4462; P265GH; 2.4605
Glass:	Borosilicate glass DIN 7080
Gasket:	PTFE enclosed resilient gasket
Screws:	A4-80
Special materials on request	

NPS	2"	3"	4"	5"	6"	8"	16"
Di	65	80	100	125	125	150	410
H	41	50	59	66	66	66	70
Da	According to ASME B 16.5						
L							
K							

¹ limited by gasket; for higher temperatures alternative: Type 323A



Round sight glass fitting CLASS 150 - 1500

ANSI / ASME flange mounting similar to DIN 28121

Type 321A

PRODUCTCODE:

Group	TYPE	CLASS*	NPS	Base flange*	Glass	Gasket	Variant
11	321A	1: 150 2: 300 3: 400 4: 600 5: 900 6: 1500 7: Special	1: 2" 2: 3" 3: 4" 4: 5" 5: 6" 6: 8" 7: 10" 8: 12" 9: 14" 10: 16" 11: Special	1: 1.4571 2: 1.4541 3: 1.4404 4: 1.4539 5: 1.4306 6: 1.4435 7: 1.4462 8: P265GH 9: 2.4605 10: Special	1: Borosilicate glass (Boro) DIN 7080 2: Soda lime glass (SLG) DIN 8902 3: Quartz glass 4: Boro + PTFE wiper 5: Boro + silicone wiper 6: SLG + PTFE wiper 7: SLG + silicone wiper	1: PTFE	0: Standard version FE: FEP protective screen MI: Mica-shield Assigned by ACI if required

INFO: Unless otherwise stated, the factory standard highlighted is supplied.

*Class only referred to the bolt hole circle. Pressure max 20 bar! For higher pressures see high pressure version Type 322A.

SPECIAL DESIGNS/OPTIONS:

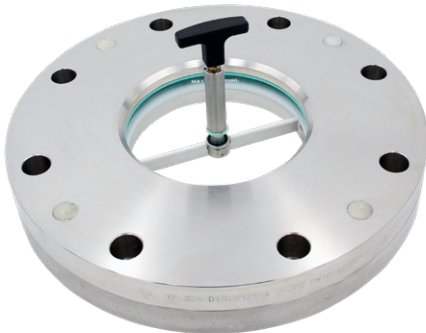
- Wiper SWI or SWII with PTFE or silicone Wiper blade
- Spray device SVII
- LED or halogen lights, ATEX-certified, EX
- High-temperature version (Type 323)
- Vacuum version (Typ 324)²
- FEP protective screen

² depending on environmental variables

EXAMPLE:

11-321A-1-4-1-1-1-00 equals the product code:

ACI Type 321A
CLASS 150
NPS 5''
flanges 1.4571
borosilicate glass
PTFE enclosed resilient gasket
standard version



RECOMMENDATION:

For aggressive media or steam, mica discs should be used to protect the glass.

Contact in Germany:
ACI Industriearmaturen GmbH
Tel. +49 (0) 2403 748 850
info@aci24.com • www.aci24.com

Contact in Poland:
Continental Trade Sp. z o.o.
office@continentaltrade.com.pl
http://continentaltrade.com.pl

20190917

Technical changes and errors reserved!