

Oval execution

USAGE

Longitudinal sight glass fittings serve to observe the liquid level inside closed containers (boilers, tanks, silos, etc.). Sight glass fittings of type 337 are oval longitudinal sight glass fittings for welding in or onto, completed with one sight glass plate sandwiched and securely fastened between the gaskets.

OPERATING CONDITIONS

Temperature: (depending on glass and gasket)	≤ 243 °C	Borosilicate glass reflex and transparent DIN 7081 (Saturated steam or hot water pressure)
	≤ 280 °C	Borosilicate glass reflex and transparent DIN 7081 (without technically significant glass attack)
	≤ 320 °C	Borosilicate glass transparent DIN 7081 (with mica protection)
Pressure:	≤ 25 barg	

Materials

Base frame:	1.4571; 1.4404
Glass:	Borosilicate glass (similar to or similar to) DIN 7081 reflex or transparent glass
Gasket ¹⁾ :	PTFE; FKM; NBR; C4400; Silicone; EPDM; Graphite
Screws	A2-70 / A4-70
Special materials on request	

1) See „INFO Gaskets“

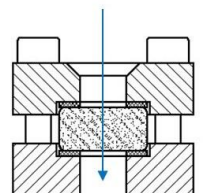
INSTALLATION NOTE

After welding the base frame, it must be checked whether the seal surface has warped. If necessary, reworking must be done! Please also observe the specified torque values for the bolting, according to the operating and maintenance instructions! The working pressure does not apply to the base frame, this must be checked together with the pressure device according to AD2000 Leaflet B9!

REFLECTIVE AND TRANSPARENT GLASS

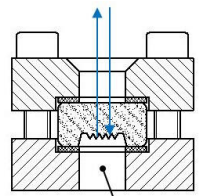
For clear media, dark or unilluminated containers, or a closed level indicator, the use of a reflective sight glass is recommended (see next to the image). The light refraction in the embedded prisms can make the level more recognizable. If the container is illuminated, the medium is very clear, or if the color of the medium needs to be recognized, a transparent glass should be used. Reflective glass cannot be protected with mica plates, as this would interrupt the reflection. We are happy to assist you in selecting the suitable version.

Light rays



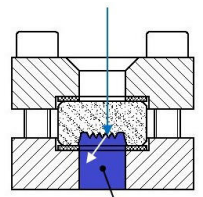
Transparent glass

Light rays



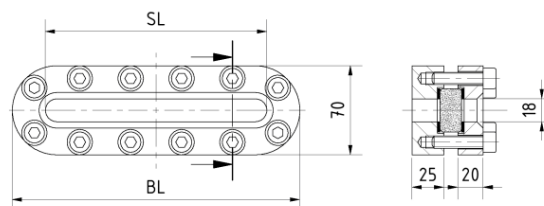
Reflection glass
without liquid

Light rays



Reflection glass
with liquid

DRAWING



BL [mm]	176	226	256	316	376	436	496	536
SL [mm]	124	174	204	264	324	384	444	484
Weight [kg]	3.3	4.3	4.9	6.0	7.1	8.3	9.4	10.2



Longitudinal sight glass fitting type 337 PN 25

For welding in or on

Type 337

PRODUCT CODE

Example for Explaining the Code Composition

11 - 337 - 256 - 2 - 1 - 4 - 000

GROUP	TYPE	LENGTH	BASE FRAME	GLASS	GASKET	VARIANT
11	337	176	2) 1.4571	1) Borosilicate glass (DIN 7081) transparent glass	1) PTFE	000) Standard
		226	3) 1.4404	2) Borosilicate glass (DIN 7081) transparent glass + Mica protection pane	2) FKM	
		256	8) Special	3) Borosilicate glass (DIN 7081) reflective glass	3) NBR	
		316		5) Non-tempered borosilicate glass transparent glass	4) C4400	
		376			5) Silicone	
		436			6) EPDM	
		496			7) Graphite	
		536			8) Special	

Unless otherwise specified, the highlighted factory standard will be delivered.



EXAMPLE

The product code 11-337-256-2-1-4-000 corresponds to the standard version:

ACI type 337

256 mm long

PN 25

Base frame made of 1.4571

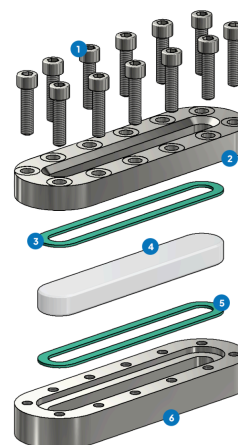
Cover frame made of 1.4571

Borosilicate glass transparent DIN 7081

Gasket KlingerSil® C4400

STRUCTURE

1. Screws
2. Cover frame
3. Glass cushions
4. Sight glass
5. Gasket
6. Base frame



For aggressive media, FEP or Halar® coated sight glass plates can be used. In case of steam, mica discs should be used to protect the glasses.



QUICK OVERVIEW



max. 25 barg



heat-resistant up to 320
°C



for liquid media



for gaseous media



Total length
176 - 536 mm



Custom made design
possible



>50 gasket materials



Accessories available

OPERATING CONDITIONS

Operating conditions depend on the choice of glass and gaskets:

		SIGHT GLASS				GASKETS						
		Borosilicate glass (DIN 7081) transparent glass	Borosilicate glass (DIN 7081) transparent glass + Mica protection	Borosilicate glass (DIN 7081) reflective glass	Borosilicate glass untempered transparent glass	PTFE max. 200 °C	FKM max. 200 °C	NBR max. 80 °C	C400 max. 175 °C	Silicone max. 180 °C	EPDM max. 130 °C	Graphite > 400 °C
TEMPERATURE	up to 130 °C	✓	✓	✓	✓	✓	✓	✗	✓	✓	✓	✓
	up to 150 °C	✓	✓	✓	✓	✓	✓	✗	✓	✓	✗	✓
	up to 175 °C	✓	✓	✓	✓	✓	✓	✗	✓	✓	✗	✓
	up to 200 °C	✓	✓	✓	✓	✓	✓	✗	✗	✗	✗	✓
	up to 280 °C	✓	✓	✓	✓	✗	✗	✗	✗	✗	✗	✓
	up to 320 °C	✗	✓	✗	✓	✗	✗	✗	✗	✗	✗	✓
PRESSURE	up to 25 barg	✓	✓	✓	✓	✓	✓	✓	✓	✓	✓	✓

✓ suitable ✗ unsuitable



Longitudinal sight glass fitting type 337 PN 25 For welding in or on

Type 337

OPTIONAL ACCESSORIES



FEP protective screen / coating

- > for high pH values



Mica discs in longitudinal form with
round ends

- > up to 320 °C with Borosilicate glass
DIN 7081 transparent

ACI Industriearmaturen GmbH

✉ info@aci24.com

🌐 www.aci24.com

📍 Königskamp 19 · 52428 Jülich · Germany

☎ +49 (0) 2461 91634 00

☎ +49 (0) 2461 91634 44

Continental Trade Sp. z o.o.

✉ biuro@continentaltrade.com.pl ☎ +48 22 670 11 81

🌐 www.continentaltrade.com.pl 🏢 -

📍 Stara 23 · 05-270 Nadma · Poland