



Flow sight glass CLASS 150 to 300

Flow sight glass with flange connections

Type 530A



APPLICATION:

For observation of filling and flow in pipelines. This sight glass allows reliable monitoring of the function and performance of individual equipment as well as entire installations.

With standard sight glasses, pipelines that must be completely emptied have a residual liquid in the sight glass area. **With this sight glass fitting, virtually almost no residual liquid remains when installed horizontally!**

INSTALLATION NOTE:

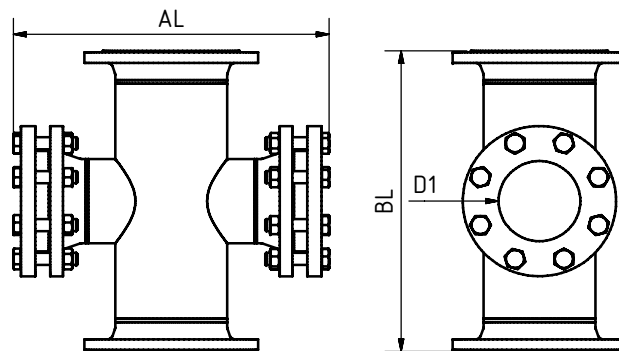
Gaskets suitable for the sealing surfaces should be used. The screw material should be equivalent to or higher than those of the sight glass body. Always use screws that match the hole pattern. If possible, the screw thread and the screw head should be lubricated.

With flange connections according to ASME 16.5 B CLASS 150 bis 300 ($\Delta P \leq 20 / 50 / 64$ bar)

Operating conditions:

| | | |
|---|---------------------|-----|
| Temperature: (depending on glass and gasket) | 150°C 280 °C | |
| Pressure: | ≤ 20 to 64^1 | Bar |
| CLASS: | 150 to 300^1 | |

¹ higher see Type 520A



Materials:

| | |
|------------------------------|--|
| Body: | 1.4571; 1.4539; 1.4404 |
| Glass: | Borosilicate glass DIN 7080 Soda lime glass DIN 8902 Quartz glass Mica META® glass |
| Gasket: | PTFE; FKM; NBR; C4400; Silicone; EPDM; Graphite |
| Screws: | A4-70 |
| Special materials on request | |

| NPS | 1" | 1 1/2" | 2" | 3" | 4" | 5" | 6" | 8" | 10" | 12" |
|---|-----|--------|-----|-----|-----|-----|-----|-----|-----|-----|
| BL | 200 | 230 | 310 | 350 | 400 | 480 | 600 | 730 | 850 | 980 |
| D1 | 35 | 45 | 55 | 84 | 107 | 132 | 160 | 160 | 160 | 160 |
| AL ² | 232 | 258 | 336 | 380 | 420 | 464 | 558 | 706 | 821 | 955 |
| ² other dimensions on request Dimensions acc. to CLASS 150, other pressure ratings may vary | | | | | | | | | | |
| Special dimensions and other standards on request | | | | | | | | | | |



Flow sight glass CLASS 150 to 400

Flow sight glass with flange connections

Type 530A

PRODUCTCODE:

| Group | TYPE | DN | PN | Body* | Glass | Gasket | Variant |
|-------|------|--|--------------------------------|---|--|--|--------------------------------|
| 11 | 530A | 1: 1" 2: 1 1/2" 3: 2" 4: 3" 5: 4" 6: 5" 7: 6" 8: 8" 9: 10" 10: 12" 11: Special | 1: 150 2: 300 3: Special | 1: 1.4571 2: 1.4404 3: 1.4539 4: Special | 1: Borosilicate glass (Boro) DIN 7080 2: Soda lime glass (NKG) DIN 8902 3: Quartz glass 4: Boro + Mica 6: META®-Glas | 1: PTFE 2: FKM 3: NBR 4: C4400 5: Silicone 6: EPDM 7: Graphite 8: Special | Assigned by ACI if required |

INFO: Unless otherwise stated, the factory standard highlighted is supplied.

* Cover flanges made of body material or according to quotation / order confirmation

SPECIAL DESIGNS/OPTIONS:

- a) Double glazing
- b) High pressure version (Type 520A)
- c) Mica protection
- d) FEP protective screen
- e) LED or halogen lights, ATEX-certified, EX
- f) Additional options on request

EXAMPLE:

11-530A-7-1-1-1-7-0 equals the product code:

ACI Type 530
NPS 7"
CLASS 150
body 1.4571
borosilicate glass
gasket graphite
standard version

ATTENTION!

The pressure-temperature limits according to ASME 16.5 B apply!

Our tool of the same name is available on our website for this purpose.

(www.ACI24.com, in the category Service, Tools)



RECOMMENDATION:

For aggressive media or steam, mica discs should be used to protect the glass.

Kontakt w Niemczech
ACI Industriearmaturen GmbH
Tel. +49 (0) 2403 748 850
info@aci24.com • www.aci24.com

Kontakt w Polsce:
Continental Trade Sp. z o.o.
tel. +48 22 670 11 81
office@continentaltrade.com.pl
<http://continentaltrade.com.pl>

20200210

Technical changes and errors reserved!