

Application:

For Liquid Level display, visual checkup and observation on vessels, boilers and silos at pressures up to 35 bar and high temperatures.

The connections sockets with $\varnothing 20$ mm are mounted to the body ends. Other diameters available on request.

Operating Pressure:
Up to 35 bar

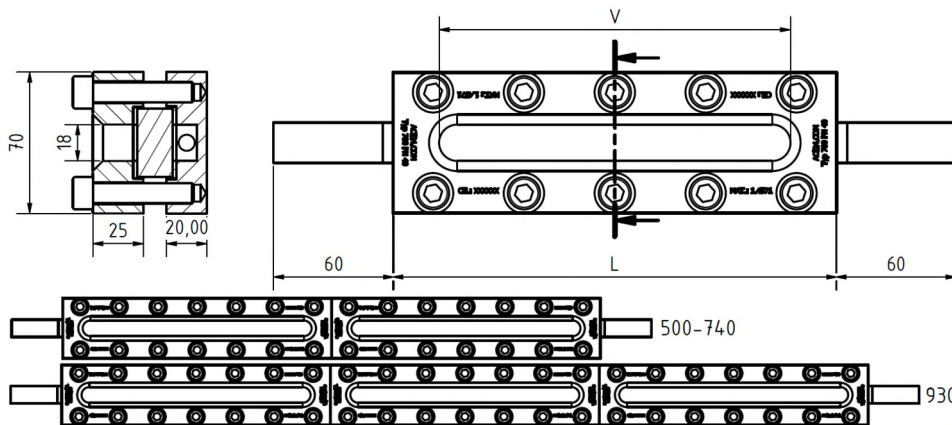
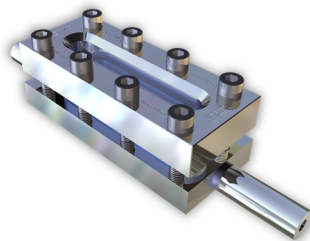
Operating conditions:

Temperature:	243	°C
Pressure:	16	Bar
	35	Bar

Materials:

Flange:	1.4571 S235GH
Glass:	Borosilicate glass DIN 7081 (Reflex or Transparent)
Seal:	C4400 Graphite PTFE NBR Viton

Other materials on request



L	170	220	250	310	370	500	620	740	930
V	124	174	204	264	324	454	574	694	884
Blocked view	0	0	0	0	0	1x46	1x46	1x46	2x46
Kg	3.9	4.9	5.5	6.7	7.9	10.8	13.2	15.6	19.7

Installation guideline:

After welding of the base flange, the sealing surface must be checked for deformations! Reworking may be required!

Technical changes and errors reserved!

 	<h2>Rectangular Sight Glass</h2> <h3>Level indicator</h3> <p>With welding ends</p>	<h2>Type 331</h2>
--	--	-------------------

Product Code:

		Inst. Length	PN	Flange	Glass	Seal	Variants
11	331	Acc. To Table	16 35	1: S235JRG 2: 1.4571 3: Base flange VA, Cover flange St. 4: Base flange St., Cover flange VA 5: Duplex	1: BS Transparent 3: BS Reflex	1: PTFE 2: FKM 3: NBR 4: C4400 5: Silicone 6: EPDM 7: Graphite 8: Special	Assigned by ACI as required

ACI Type 331
 220 mm
 PN16
 Example: Flange 1.4571 11-331-16-220-2-1-1-000
 Borosilicate glass transparent
 Seal PTFE
 Standard construction

Recommendation:
 For aggressive media or steam we recommend adding a mica disk to protect the glass.