

### Application:

For visual observation of fluid levels in vessels, boilers and silos

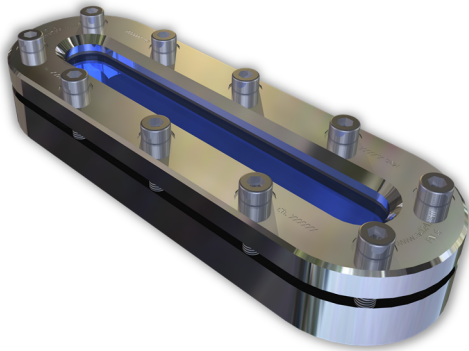
**Operating pressure:**  
Up to 6 bar

### Operating conditions:

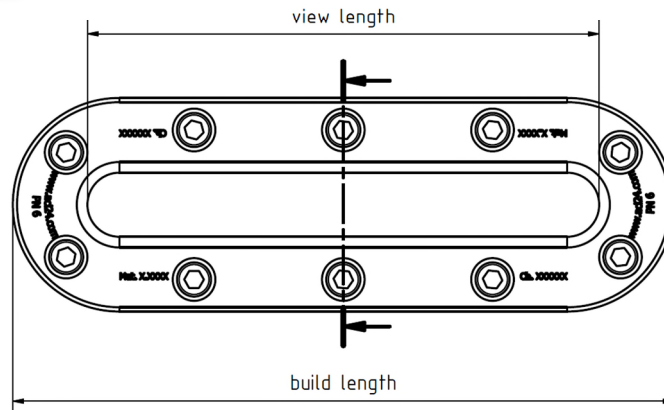
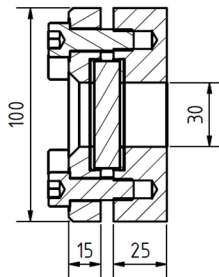
Temperature:	70	°C
(depending on glass)	100	°C
	243	°C
Pressure:	6	Bar

### Materials:

Flange:	S235JRG2 1.4571 1.4404
Glass:	PMMA protrusion glass Soda Lime Glass DIN 8903 Borosilicate glass DIN 7081
Seal:	C4400 Graphit PTFE NBR Viton



Other materials on request



<b>Inst. length</b>	<b>250</b>	<b>310</b>	<b>370</b>	<b>430</b>	<b>490</b>	<b>550</b>	<b>610</b>	<b>670</b>
View length	180	240	300	360	420	480	540	600
Kg	5.7	7.0	8.4	10.2	11.0	12.4	13.7	15.1

### Installation guideline:

After welding the base flange onto/into the pressure vessel, the sealing surface must be checked for deformations! Reworking may be required!

The operating pressure does not relate to the base flange! The base flange must be audited according to AD 2000 guidelines together with the pressure vessel!

Technical changes and errors reserved!

 	<h1>Oval Sight glass</h1> <h2>Rounded Ends</h2> <p>For welding</p>	<h1>Type</h1> <h1>336</h1>
--	--	----------------------------

Product code:

		Inst. length	Flange	Glass	Seal	Variants
11	336	Acc. To table	1: St. S235JRG 2: VA 1.4571 3: 1.4404 4: 1.4301 5: Base flange VA, Cover flange St. 6: Base flange St., Cover flange VA 7: Duplex	1: BS Transparent 2: SL Transparent 3: BS Reflex 4: SL Reflex 5: PMMA protrusion	1: PTFE 2: FKM 3: NBR 4: C4400 5: Silicone 6: EPDM 7: Graphite 8: Special	Assigned by ACI as required

**ACI Type 336**  
 250 mm  
 Flange 1.4571  
 Borosilicate glass transparent  
 Seal PTFE  
 Standard construction

Example: 11-336-250-2-1-1-000

**Recommendation:**  
 For corrosive media or steam, we recommend adding a mica disk to protect the glass!

Technical changes and errors reserved!

ACI Industriearmaturen GmbH • [www.aci24.com](http://www.aci24.com)  
 Version 2016-10-12

Contact in Poland:  
 Continental Trade Sp. z o.o.  
[www.continentaltrade.com.pl](http://www.continentaltrade.com.pl)  
[office@continentaltrade.com.pl](mailto:office@continentaltrade.com.pl)