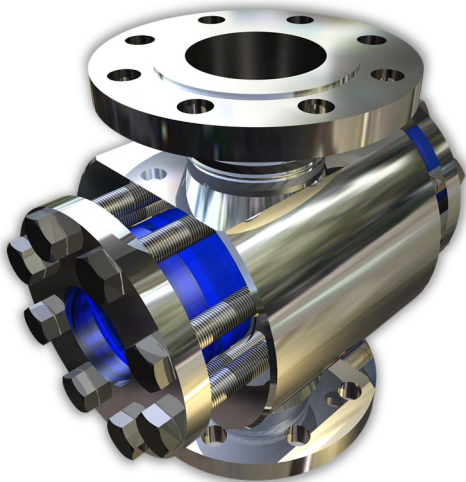


## Application:

For observation of filling and flow in piping. The Sight Glass enables a reliable survey of function and performance of single devices and complete plants.

160 bar, max. 280°C

Special constructions for  
1000 bar and higher  
temperatures possible on  
request!



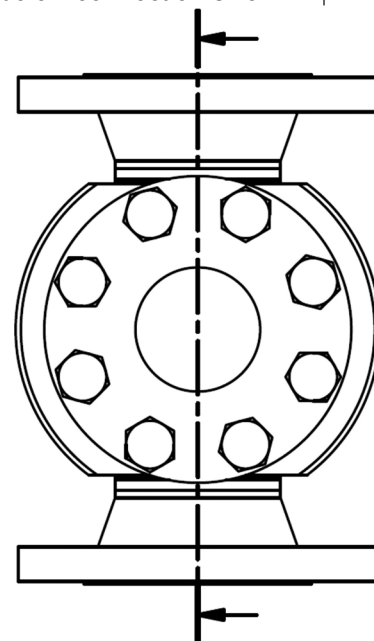
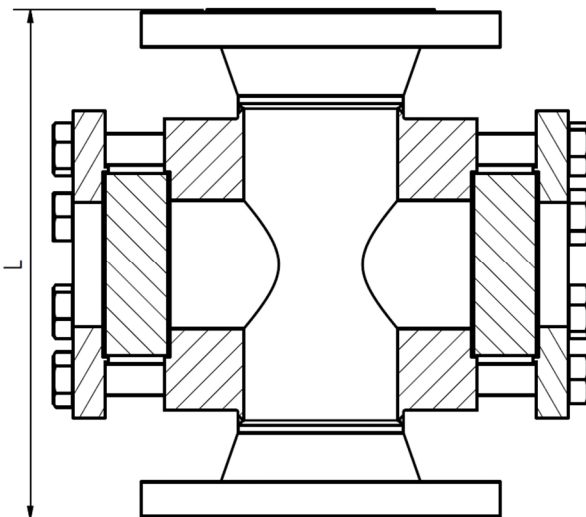
## Materials:

body:	1.4571, 1.7335, P265GH
Glass:	Borosilicate glass DIN 7080 Quartz Glass mica META®-Glass
Seal:	Graphite MST

Other materials available on request

Length	DIN EN 558-1 (if possible)
Flanges	DIN EN 1092-1 ASME B16.5

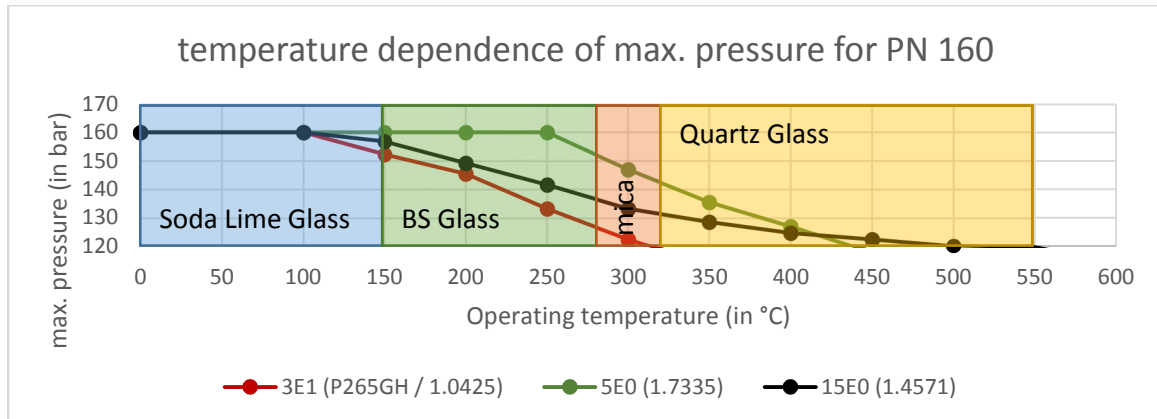
Special measurements and other  
standards available on request.  
Viewport in general 1 nominal  
size below connection size.



Technical changes and errors reserved!

## Caution!

Observe pressure-temperature ratings acc. to DIN EN 1092-1!  
 For corrosive media or steam we recommend mica disks to protect the glass



Product Code:

		DN	PN	Glass	Seal
11	520	Acc. To standard	Acc. To standard	1: borosilicate glass 2: Soda Lime Glass 5: Quartz Glass 6: BS + mica	1: PTFE 2: Viton 3: NBR 4: C4400 5: Silicone 6: EPDM 7: Graphite 8: Special

Example: **ACI Type 520**  
 PN160  
 DN150  
 Borosilicate glass  
 Seal Graphite  
 Standard construction  
 11-520-150-160-1-7

## Caution!

Some combinations of geometry and material might be unavailable!  
 Please contact us in any case before order!

## Recommendation:

For corrosive media or steam, we recommend mica disks.