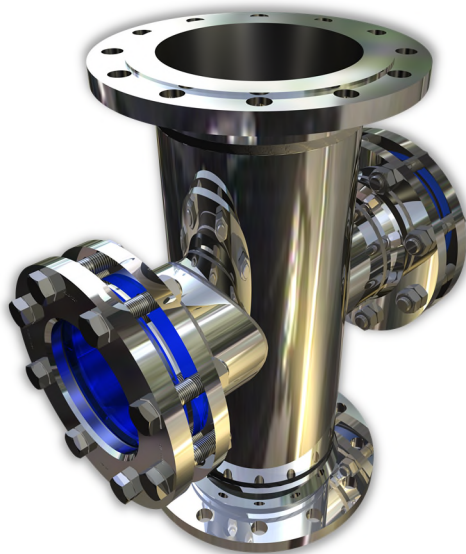
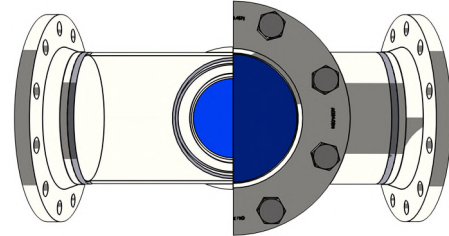


Application:

Visual survey of flow and filling processes in piping. The sight glasses allow for a reliable observation of function and performance of single devices or complete plants. With this design, no significant amount of liquid will remain in the sight glass when installed horizontally. With standard sight glasses, liquid will remain in the sight glass body. This liquid will drain out with this design.

No liquid traps!



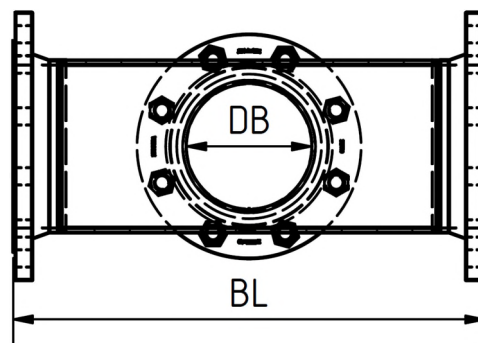
Materials:

Body	1.4571
	1.4404
	Steel
Glass:	Borosilicate glass DIN 7080
	Soda Lime Glass DIN 8902
	Quartz Glass
	META®-Glass
Seal:	Graphite MST or as chosen

Other materials on request

Operating conditions:

Pressure:	PN16
	PN40
Temperature:	150°C (DIN 8902)
	280°C (DIN 7080)



DN	40	50	80	100	125	150	200	250	300	350	400
BL	200	230	310	350	400	480	600	730	850	980	1100
DB	37	42	64	77	77	100	119	140	140	140	140

Values for PN 16, other pressure classes may differ
Special sizes or other standards on request

Technical changes and errors reserved!



Flow Sight Glass

With Flanged connections

PN16 / PN40

Type 530

Product Code:

		DN	PN	Body	Glass	Seal	Variants
11	530	Acc. To table	1: 16 2: 40	1: 1.4571 2: 1.4404 3: P265GH	1: borosilicate glass 2: Soda lime glass 5: Quartz glass 6: META®-Glass 7: BS + PTFE Wiper 8: BS + Sil. Wiper	1: PTFE 2: Viton 3: NBR 4: C4400 5: Silicone 6: EPDM 7: Graphite 8: Special	Assigned by ACI as required

ACI Type 530

DN 200

PN16

Example:

Body 1.4571

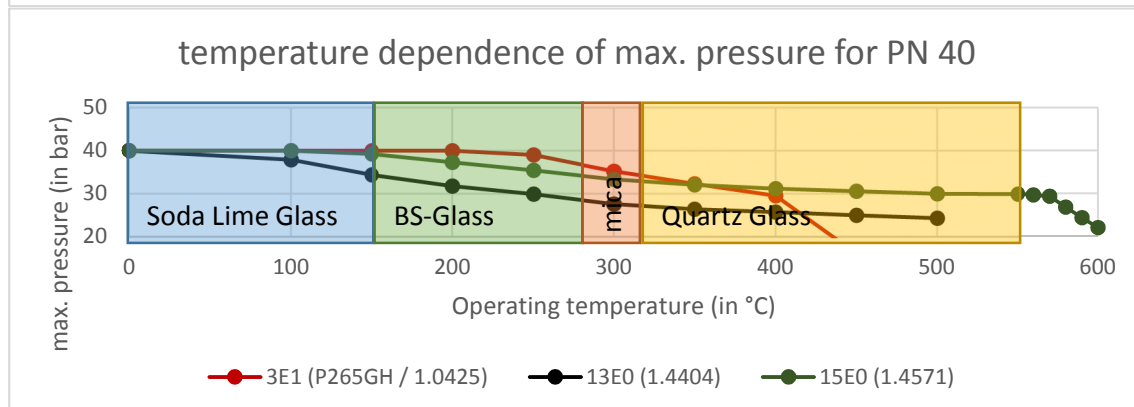
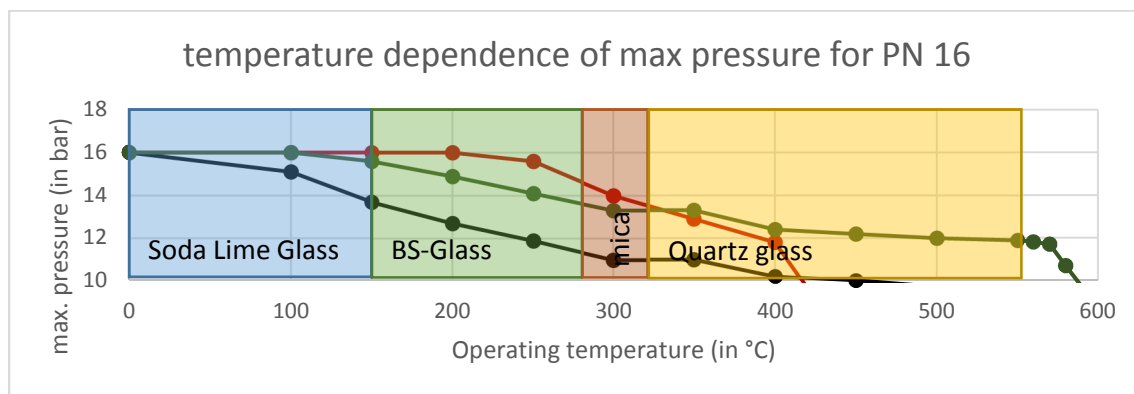
11-530-200-1-1-1-7-00

Borosilicate glass

Graphite seal

Standard construction

Caution!
 Observe pressure-temperature ratings acc. to DIN EN 1092-1!
 For corrosive media or steam we recommend mica disks!



Technical changes and errors reserved!