

# Flow Sight Glass

With double glass disks

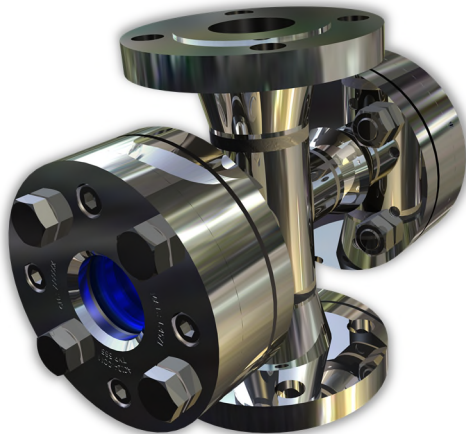
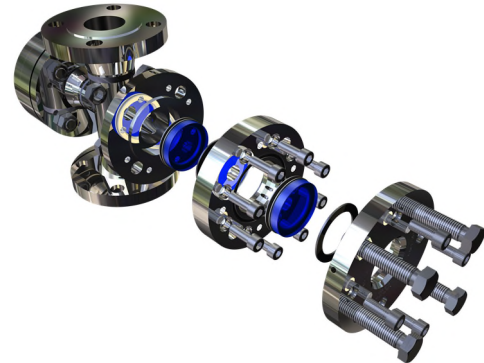
PN16

Type  
**585**

## Application:

Sight glasses with safety viewports of Type 585 are designed to withstand the maximum allowable pressure with only one single glass plate intact. This way, pressure containment is guaranteed even if one of the glass plates is damaged. Between base and intermediate flange an O-Ring seal ensures tightness even if the inner glass plate has failed. Type 585 is a true safety sight glass!

**Doubly safe!**



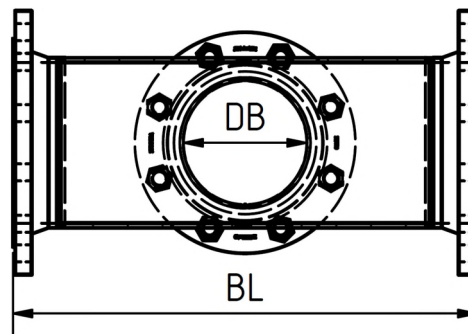
## Materials:

Body	P235GH P265GH 1.4404 1.4571
Glass:	Borosilicate glass DIN 7080 Soda Lime Glass DIN 8902 Quartz glass META®-Glass
Seal:	PTFE-enclosed resilient gasket O-Rings

Other materials on request

## Operating conditions:

Pressure:	PN16
Temperature:	Max. 200°C



DN	40	50	80	100	125	150	200	250	300	350	400
BL	200	230	310	350	400	480	600	730	850	980	1100
DB	37	42	64	77	77	100	119	140	140	140	140

Sizes for PN 16, other sizes and standards available on request

Technical changes and errors reserved!



# Flow Sight Glass

With double glass disks  
PN16

## Type 585

Product code:

		DN	PN	Body	Glass	Seal	Variants
11	585	Acc. To table	1: 16	1: 1.4571 2: 1.4404 3: P265GH 4: P235GH	1: Borosilicate glass 2: Soda Lime glass 5: Quartz glass 6: META®-Glass	1: PTFE enclosed resilient gasket according to spec.	Assigned by us as required

### ACI Type 585

DN 50

PN16

Example:

Body 1.4571

11-585-050-1-1-1-1-00

Borosilicate glass

PTFE enclosed resilient gasket

Standard construction

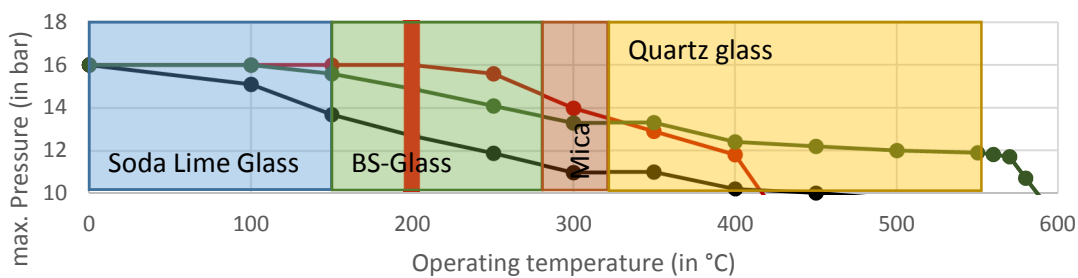
## Caution!

Observe pressure temperature ratings acc. to DIN EN 1092-1!

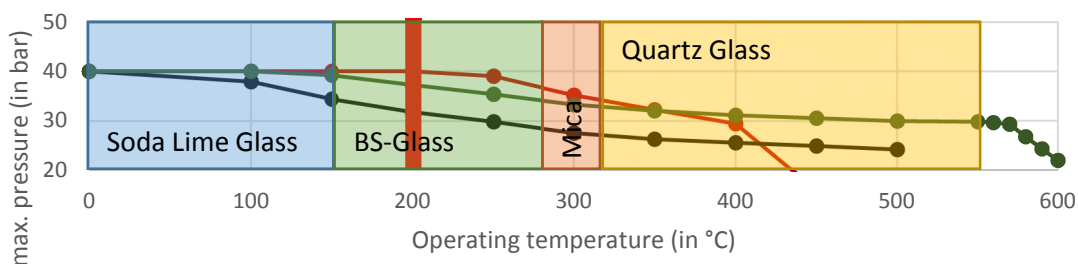
PTFE seals are limited to 200°C! Higher temperatures possible in some cases on request.

For steam and corrosive media, we recommend adding mica disks!

Temperature dependence of max. pressure for PN 16



Temperature dependence of max. pressure for PN 40



—●— 3E1 (P265GH / 1.0425)    —●— 13E0 (1.4404)    —●— 15E0 (1.4571)

Technical changes and errors reserved!