



USAGE

Longitudinal sight glass fittings serve to observe and illuminate the interior of closed containers (boilers, tanks, silos, etc.). Type 336 sight glass fittings are oval longitudinal sight glass fittings for welding in or onto, completed with a sight glass plate inserted between the seals and firmly screwed in place.

OPERATING CONDITION

| | | |
|---|----------|--|
| Temperature: (depending on glass and gasket) | ≤ 280 °C | Borosilicate glass transparent similar to DIN 7081 |
| Pressure: | ≤ 6 barg | |

MATERIALS

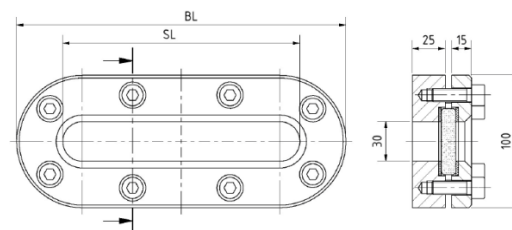
| | |
|------------------------------|--|
| Base frame: | 1.4571; 1.4404 |
| Glass: | Borosilicate glass transparent similar to DIN 7081 |
| Gasket ¹⁾ : | PTFE; FKM; NBR; C4400; Silicone; EPDM; Graphite |
| Screws: | A2-70 / A4-70 |
| Special materials on request | |

1) See „INFO Gaskets“

INSTALLATION NOTE

After welding the base frame, it must be checked whether the sealing surface has warped. If necessary, it must be reworked! Also, pay attention to the specified torque values for the bolting, according to the working and maintenance instructions! The working pressure does not apply to the base frame, this should be checked together with the pressure device according to AD2000 Leaflet B9!

DRAWING



| BL [mm] | 250 | 310 | 370 | 430 | 490 | 550 | 610 | 670 |
|-------------|-----|-----|-----|-----|------|------|------|------|
| SL [mm] | 180 | 240 | 300 | 360 | 420 | 480 | 540 | 600 |
| Weight [kg] | 5.6 | 6.9 | 8.2 | 9.6 | 10.9 | 12.2 | 13.6 | 14.9 |



Longitudinal sight glass fitting type 336 PN 6 For welding in or on

Type 336

PRODUCT CODE

Example for Explaining the Code Composition

11 - 336 - 430 - 2 - 1 - 4 - 000

| GROUP | TYPE | LENGTH | BASE FRAME ¹ | GLASS | SEAL | VARIANT |
|-------|------|--------|-------------------------|---|-------------|---------------|
| 11 | 336 | 250 | 2) 1.4571 | 1) Borosilicate glass transparent similar to DIN 7081 | 1) PTFE | 000) Standard |
| | | 310 | 3) 1.4404 | 6) Special | 2) FKM | |
| | | 370 | 8) Special | | 3) NBR | |
| | | 430 | | | 4) C4400 | |
| | | 490 | | | 5) Silicone | |
| | | 550 | | | 6) EPDM | |
| | | 610 | | | 7) Graphite | |
| | | 670 | | | 8) Special | |

1) Cover frame according to offer / order confirmation



Unless otherwise specified, the highlighted factory standard will be delivered.

EXAMPLE

The product code **11-336-430-2-1-4-000** corresponds to the standard version:

ACI type 336

430 mm long

PN 6

Base frame made of 1.4571

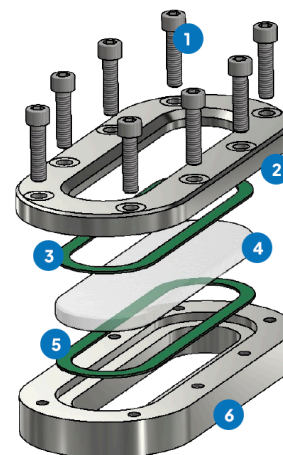
Cover frame made of 1.4571

Borosilicate glass, transparent, similar to DIN 7081

Gasket KlingerSil® C4400

STRUCTURE

1. Screws
2. Cover frame
3. Glass cushion
4. Sight glass
5. Gasket
6. Base frame



For aggressive media, FEP or Halar® coated sight glasses can be used. In steam, mica discs should be used to protect the glasses.



QUICK OVERVIEW



max. 6 barg



heat resistant up to 280
°C



for liquid media



for gaseous media



Total length
250 - 670 mm



Special customizations
possible



> 50 gasket materials



Accessories available

OPERATING CONDITIONS

TERMS AND CONDITIONS: Terms and conditions depend on the choice of glass and gaskets:

| | | VIEW GLASS | GASKETS | | | | | | |
|-------------|--------------|--|---------------------|--------------------|-------------------|----------------------|-------------------------|---------------------|----------------------|
| | | Borosilicate glass transparent similar to DIN 7081 | PTFE max. 200 °C | FKM max. 200 °C | NBR max. 80 °C | C4400 max. 175 °C | Silicone max. 180 °C | EPDM max. 130 °C | Graphite > 400 °C |
| TEMPERATURE | up to 80 °C | ✓ | ✓ | ✓ | ✓ | ✓ | ✓ | ✓ | ✓ |
| | up to 130 °C | ✓ | ✓ | ✓ | ✗ | ✓ | ✓ | ✓ | ✓ |
| | up to 150 °C | ✓ | ✓ | ✓ | ✗ | ✓ | ✓ | ✗ | ✓ |
| | up to 175 °C | ✓ | ✓ | ✓ | ✗ | ✓ | ✓ | ✗ | ✓ |
| | up to 200 °C | ✓ | ✓ | ✓ | ✗ | ✗ | ✗ | ✗ | ✓ |
| | up to 280 °C | ✓ | ✗ | ✗ | ✗ | ✗ | ✗ | ✗ | ✓ |
| PRESSURE | up to 6 barg | ✓ | ✓ | ✓ | ✓ | ✓ | ✓ | ✓ | ✓ |

✓ suitable ✗ unsuitable



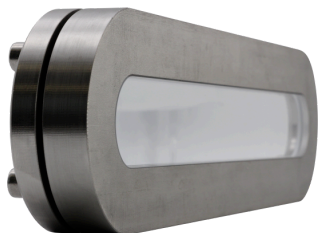
ACI
INDUSTRIEARMATUREN

Longitudinal sight glass fitting type 336 PN 6

For welding in or on

Type 336

OPTIONAL ACCESSORIES



Nearly dead space-free design

> with Stepped glass



FEP protective screen / coating

> for high pH values

ACI Industriearmaturen GmbH

✉ info@aci24.com

🌐 www.aci24.com

📍 Königskamp 19 · 52428 Jülich · Germany

☎ +49 (0) 2461 91634 00

☎ +49 (0) 2461 91634 44

Continental Trade Sp. z o.o.

✉ biuro@continentaltrade.com.pl

🌐 www.continentaltrade.com.pl

📍 Stara 23 · 05-270 Nadma · Poland

☎ +48 22 670 11 81

☎ -