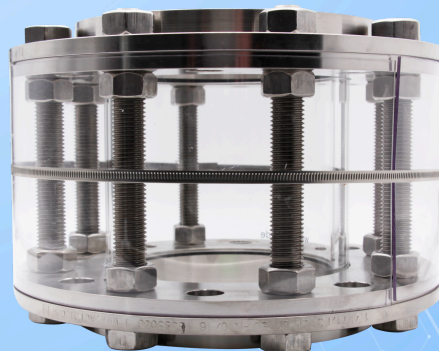




ACI
INDUSTRIEARMATUREN

Tubular sight glass type 620A Class 150 with flange connections according to ASME B16.5

Type 620A



With flange connections according to ASME B16.5

USAGE

Pipe sight glasses are used to observe fillings and flow in pipelines. The sight glass allows for reliable 360° monitoring of the function and performance of individual devices as well as entire systems. The tubular sight glass type 620A is executed with flanges on both sides suitable for ASME B16.5 Class 150 lbs.

Operating condition

Temperature: (dependent on glass and gasket)	up to 300 °C ¹ with borosilicate glass 3.3
Pressure:	≤ 16 barg

1) Higher upon request

Materials

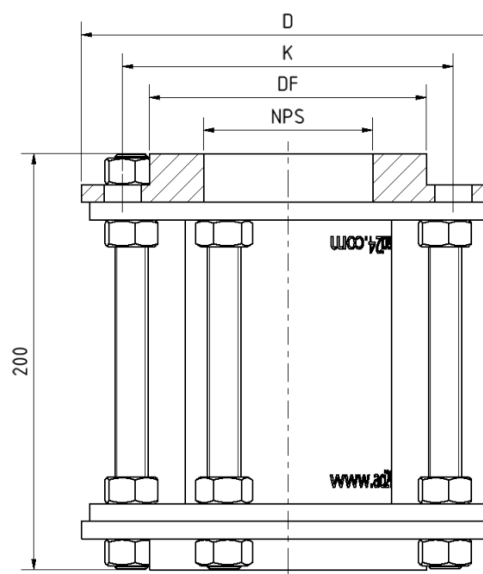
Flanges:	1.4571
Glass cylinder:	Borosilicate glass 3.3
Gasket ² :	PTFE; FKM; NBR; C4400; Silicone; EPDM; Graphite
Threaded rods and nuts:	A4-70
Special materials upon request	

2) See "INFO Gaskets"

INSTALLATION NOTE

Seals are to be used that fit exactly to the sealing surfaces. The screw material should correspond to that of the sight glass body or be of higher quality. Screws must match the hole pattern of the flanges. Threads and screw heads should be treated with lubricant whenever possible. Pipe sight glasses must be installed without tension – pipe forces, vibrations, and pressure shocks must not act on the fitting.

DRAWING





NPS	1/2"	3/4"	1"	1 1/2"	2"	3"	4"	6"	8"
LK [mm]	60	70	79	98	121	152	190	241	298
DF [mm]	35	43	51	73	92	127	157	216	270
D [mm]	95	105	115	150	165	200	230	285	345
PS [barg]	16	16	16	16	16	10	10	7	5

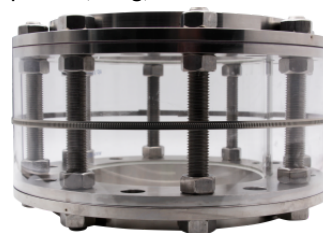
SPECIAL VERSIONS/OPTIONS

- a) Impact protection cover
- b) Additional run-in phase for special piping
- c) Additional options on request

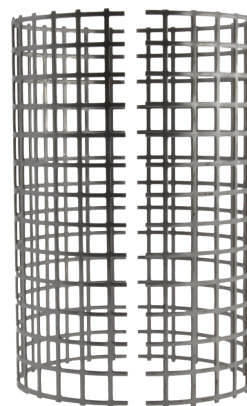
IMPACT PROTECTION COVER (OPTIONAL)

Optionally, the tubular sight glass type 620A can be fitted with an elastic impact protection cover to protect the glass tube. Alternatively, a robust impact protection made of stainless steel perforated sheet is also available.

Type 620A with impact
protection cover made of
plastic (PETg)



Type 620A with impact
protection cover made of
perforated sheet metal





PRODUCT CODE

Example for Explaining the Code Composition

11 - 620A - 3 - 2 - 4 - 0 - 000

GROUP	TYPE	NOMINAL SIZE	FLANGE	GASKET	IMPACT PROTECTION	TOTAL LENGTH
11	620A	1) 1/2"	2) 1.4571	1) PTFE	0) without impact protection sleeve	000) Standard (200 mm)
		2) 3/4"	8) Special	2) FKM	1) with impact protection sleeve made of PETg (Tmax. 80 °C)	
		3) 1"		3) NBR	2) with impact protection sleeve made of perforated sheet (Tmax. 300 °C)	
		5) 1 1/2"		4) C4400		
		6) 2"		5) Silicone		
		8) 3"		6) EPDM		
		9) 4"		7) Graphite		
		10) 6"		8) Special		
		11) 8"				



Unless otherwise specified, the highlighted factory standard will be delivered.

EXAMPLE

The product code **11-620A-3-2-4-0-000** corresponds to the standard version:

Type 620A

NPS 1"

Flanges made of 1.4571

Gasket KlingerSil® C4400

without impact protection

Standard length 200 mm

STRUCTURE

1. Nuts
2. Flange
3. Threaded rod
4. Borosilicate glass cylinder
5. Gasket





ACI
INDUSTRIEARMATUREN

Tubular sight glass type 620A Class 150 with flange connections according to ASME B16.5

Type 620A

QUICK OVERVIEW



max. 16 barg



heat resistant up to 300
°C



for liquid media



for gaseous media



Nominal sizes
NPS 1/2" - 8"



custom manufacturing
possible



> 50 sealing materials



accessories available

OPERATING CONDITIONS

Operating conditions depend on the choice of glass and the seals:

		Sight glass		Gaskets					
		Borosilicate glass 3.3	PTFE max. 200 °C	FKM max. 200 °C	NBR max. 80 °C	C4400 max. 175 °C	Silicone max. 180 °C	EPDM max. 130 °C	Graphite > 300 °C
TEMPERATURE	up to 80 °C	✓	✓	✓	✓	✓	✓	✓	✓
	up to 130 °C	✓	✓	✓	✗	✓	✓	✓	✓
	up to 175 °C	✓	✓	✓	✗	✓	✓	✗	✓
	up to 200 °C	✓	✓	✓	✗	✗	✗	✗	✓
	up to 300 °C	✓	✗	✗	✗	✗	✗	✗	✓
	>300 °C	on request	on request						
PRESSURE	up to 16 barg	✓	✓	✓	✓	✓	✓	✓	✓

✓ suitable ✗ unsuitable

ACI Industriearmaturen GmbH

✉ info@aci24.com

🌐 www.aci24.com

📍 Königskamp 19 · 52428 Jülich · Germany

☎ +49 (0) 2461 91634 00

📞 +49 (0) 2461 91634 44

Continental Trade Sp. z o.o.

✉ biuro@continentaltrade.com.pl

🌐 www.continentaltrade.com.pl

📍 Stara 23 · 05-270 Nadma · Poland

☎ +48 22 670 11 81

📞 -