



**ACI**  
INDUSTRIEARMATUREN

## Valve fluid level indicator type 460

Valve fluid level indicator with threaded or flange connection

# Type 460



Rear threaded or flange connections for operating pressures up to 25 barg

### USAGE

For displaying the liquid level in containers, boilers, and silos. Version for working pressure up to 25 barg, optionally with threaded or flange connection. With additional, one-sided drain valve for complete emptying.

#### Operating condition:

Temperature:	200 °C
Pressure:	≤ 25 <sup>1</sup> barg
1) Depending on the design / nominal size (see table on the following page)	

#### Materials:

Valves:	1.4571
Glass tube:	Borosilicate glass
Seal:	PTFE / Centellen
Impact protection tube:	Plexiglas®

### INSTALLATION NOTE

When installing, care must be taken to ensure that the valves are precisely aligned to avoid stresses in the glass tube! The indication rotor must not be used as a load-bearing component. For center distances greater than 1500 mm, additional intermediate supports are required! In such cases, we point out the necessity of this. The dimensions of the intermediate supports can be derived from the following drawings.

### IMPACT PROTECTION

To protect against unintentional damage to the glass tube, an impact protection tube can be used. This is made of a Plexiglas® tube crafted to length. In addition, the impact protection can help reduce bending stresses.



**Valve fluid level  
indicator type 460**  
Valve fluid level indicator with  
threaded or flange  
connection

**Type  
460**

A	G 1/2"	G 3/4"	DN 15	DN 20
L1	63	96	85.5	108
L2	98	98	98	98
L3	65	62	65	76
LV	93.5	95	94	97
LH	119	122	119	122
G	13	16	13	20
PS max (barg)	25	25	25	20



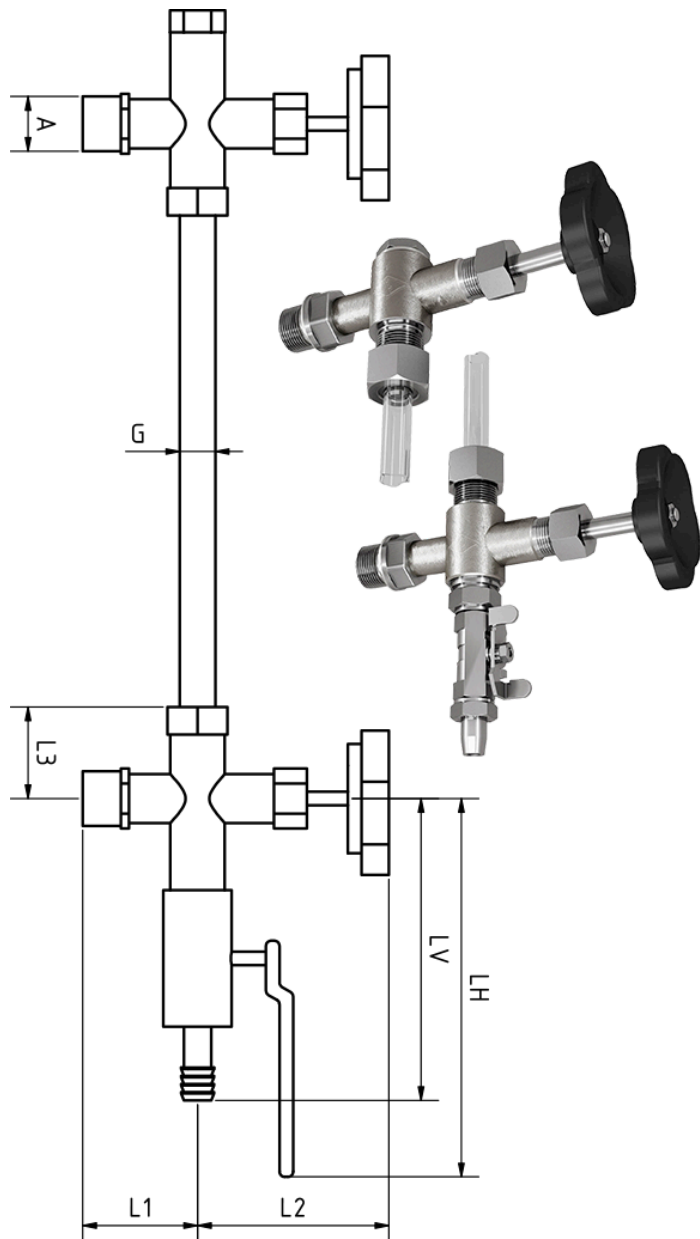
**ACI**  
INDUSTRIEARMATUREN

# Valve fluid level indicator type 460

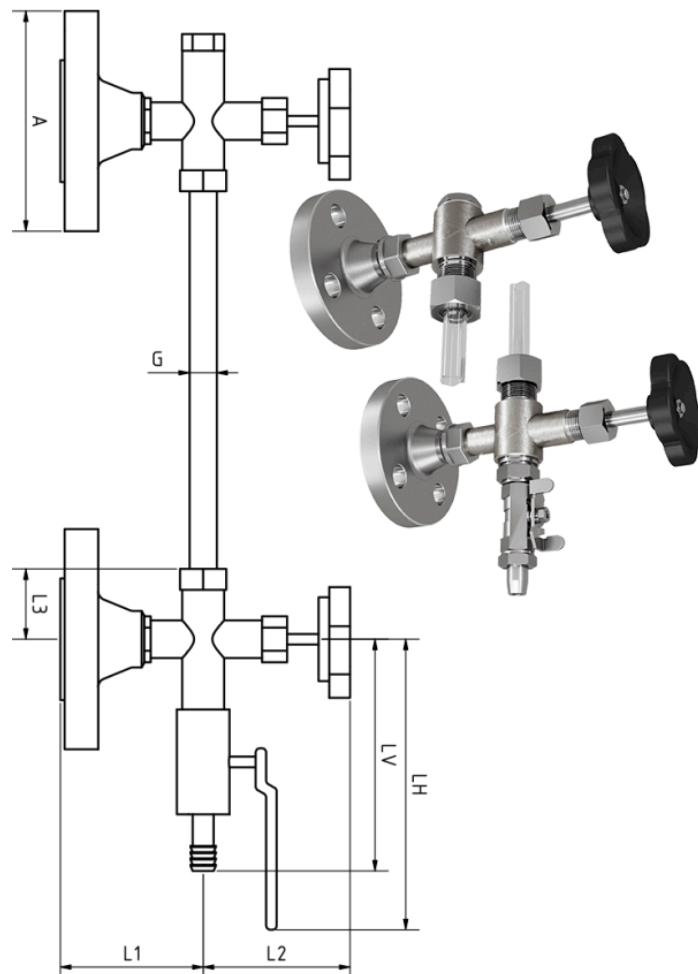
Valve fluid level indicator with threaded or flange connection

# Type 460

## SCREW CONNECTION

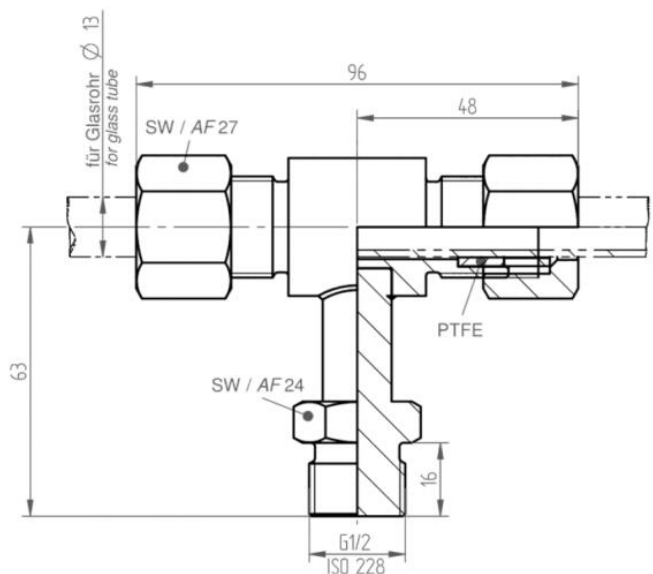


## FLANGE CONNECTION

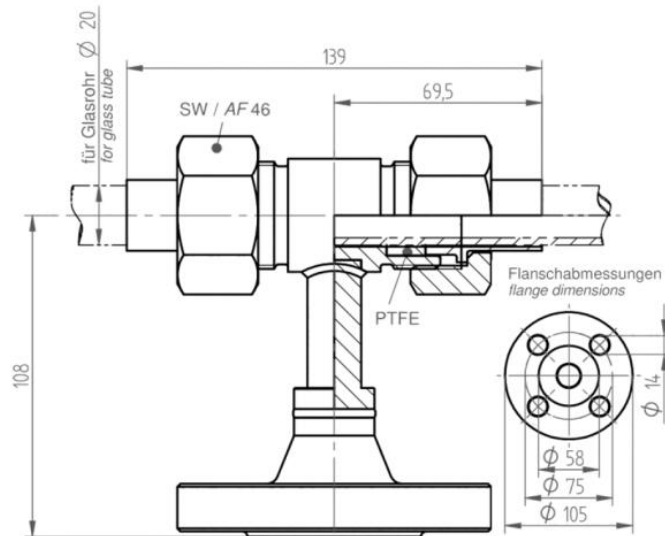




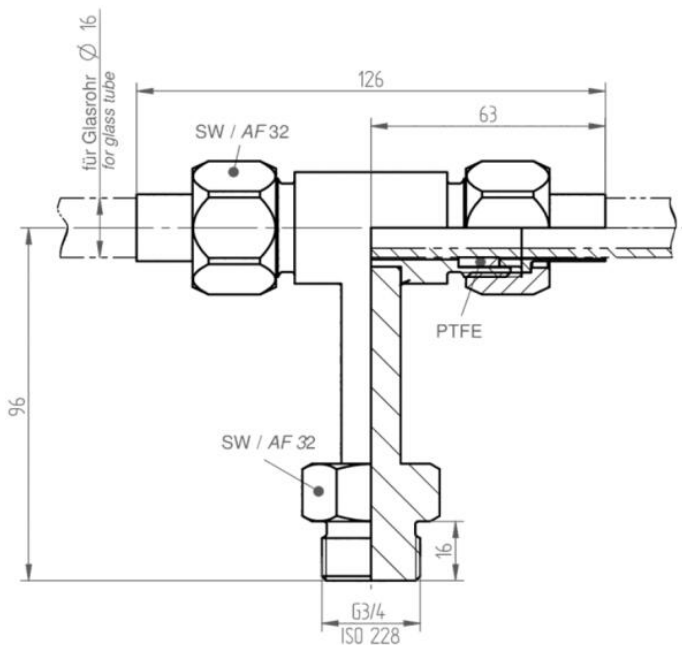
## Glass Tube Mass - Intermediate Holder and Mounting Options



G 1/2" and DN 15



DN 20



G 3/4"



## Valve fluid level indicator type 460

Valve fluid level indicator with threaded or flange connection

# Type 460

### PRODUCT CODE

Example for Explaining the Code Composition

**11 - 460 - 1 - 1 - 1000 - 1**

GROUP	TYPE	CONNECTION	NOMINAL SIZE	CENTER DISTANCE	IMPACT PROTECTION
11	460	1) Thread	1) G 1/2" / DN 15	On request	1) with impact protection
		2) Flange	2) G 3/4" / DN 20		2) without impact protection



Unless otherwise specified, the highlighted factory standard will be delivered.

### EXAMPLE

The product code **11-460-1-1-1000-1** corresponds to the standard version:

ACI type 460

G 1/2" BSP threaded connection

1000 mm center distance (always customer-specific)

with impact protection tube made of Plexiglas®



**ACI**  
INDUSTRIEARMATUREN

## Valve fluid level indicator type 460

Valve fluid level indicator with threaded or flange connection

# Type 460

### QUICK OVERVIEW



max. 25 barg



heat resistant up to 200 °C



for liquid media



Nominal sizes  
1/2" - 3/4"  
DN 15 - DN 20



To minimize bending stresses, an impact protection is recommended!

ACI Industriearmaturen GmbH

✉ [info@aci24.com](mailto:info@aci24.com)

🌐 [www.aci24.com](http://www.aci24.com)

📍 Königskamp 19 · 52428 Jülich · Germany

☎ +49 (0) 2461 91634 00

📞 +49 (0) 2461 91634 44

Continental Trade Sp. z o.o.

✉ [biuro@continentaltrade.com.pl](mailto:biuro@continentaltrade.com.pl) ☎ +48 22 670 11 81

🌐 [www.continentaltrade.com.pl](http://www.continentaltrade.com.pl) 📞 -

📍 Stara 23 · 05-270 Nadma · Poland