

Similar to DIN 28121 high pressure and high temperature ($\Delta P \leq 10$ to 360 bar) ($\Delta T \leq 1000$ °C)

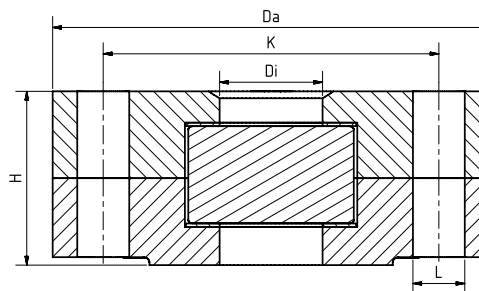
USAGE

Observation and illumination of the interior of closed containers (boilers, tanks, silos, etc.). Type 326 sight glass fittings are suitable for higher temperatures and pressures than those specified in DIN 28121 due to the use of appropriate materials. Thanks to specialized gaskets and high-quality steels, temperatures of 1000° C and high pressures up to 360 barg are possible.

INSTALLATION NOTE

Seals suitable for the sealing surfaces should be used. The screw material should be equal to or higher than that of the sight glass body. In principle, screws should be used that match the hole pattern. Whenever possible, the screw thread and the screw head should be coated with lubricant.

DRAWING



DN according to inquiry

Di	Dependent on pressure and temperature
H	
Da	According to DIN EN 1092-1*
L	
K	

*ASME B 16.5 flange connection on request

SPECIAL VERSIONS/OPTIONS

a) LED or halogen lamps, ATEX-certified, EX

b) Additional options on request



High-temperature container sight glass type 326

High-temperature container
sight glass type 326

Type 326

PRODUCT CODE

Example for Explaining the Code Composition

11 - **326** - **63** - **1** - **2** - **0**

GROUP	TYPE	PN	DN	FLANGE	GLASS	SEAL	VARIANT
11	326	1: 10	on request	1: 1.4571	1: borosilicate glass untempered	1: graphite	Assigned by ACI if necessary
		2: 16		2: 1.4541	2: quartz glass	2: mica	
		3: 25		3: 1.4404	3: sapphire glass	3: carbon fiber	
		4: 40		4: 1.4539		4: custom-made	
		5: 63		5: 1.4948			
		6: 100		6: 1.4462			
		7: 160		7: 1.6920			
		8: 250		8: 2.4605			
		9: 320		9: P265GH			
				10: custom-made			



Unless otherwise stated, the highlighted factory standard is delivered.



High-temperature container sight glass type 326

High-temperature container
sight glass type 326

Type 326

OPERATING CONDITIONS

Operating Conditions		
Temperature: (depending on glass and gasket)	400 °C to 1000 °C	
Pressure:	10 to 360	Bar

☒ suitable ☐ unsuitable

ACI Industriearmaturen GmbH

✉ info@aci24.com

🌐 www.aci24.com

📍 Königskamp 19 · 52428 Jülich · Germany

☎ +49 (0) 2461 91634 00

📞 +49 (0) 2461 91634 44

Continental Trade Sp. z o.o.

✉ biuro@continentaltrade.com.pl ☎ +48 22 670 11 81

🌐 www.continentaltrade.com.pl 📞 -

📍 Stara 23 · 05-270 Nadma · Poland