

### APPLICATION:

Screw sightglass fittings are used to observe processes inside boilers, vessels and pipelines. Their applications are in the food industry, dairies, breweries, beverage industry and in pharmaceutical and medical technology. Due to the screw cap, quick cleaning of the sight glass is possible. The high permissible temperatures additionally enable sterilization.

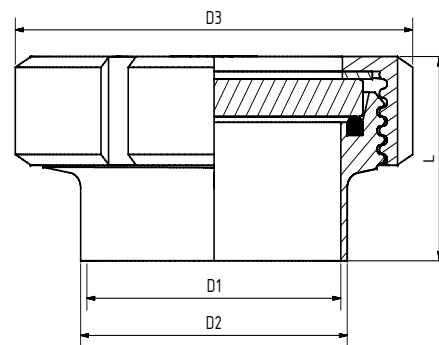
### INSTALLATION NOTE:

Ensure that the threaded socket is welded in without distortion! Welding work must be carried out by trained and authorized personnel.

Similar to  
**DIN 11851 / EN 10357**

### Operating conditions:

Temperature: (depending on glass and gasket)	up to 200 °C with Borosilicate glass according to DIN 7080 or similar	
Pressure:	≤10	bar(g)
Pressure with wiper:	≤6	bar(g)



### Materials:

Flange:	1.4404; 1.4301/7
Glass:	Borosilicate glass according to DIN 7080 or similar
Gasket: <sup>3</sup>	PTFE; FKM; NBR; Silicone; EPDM
<sup>3</sup> see INFO- gaskets-leaflet	

DN	25	32	40	50	65	80	100	125	150
D1 [mm]	26	32	38	50	66	81	100	125	150
D2 [mm]	29	35	41	53	70	85	104	129	154
D3 [mm]	63	70	78	92	112	127	148	178	210
L [mm]	37	40	41	43	48	54	64	58	60
Wt. [kg]	0.31	0.40	0.50	0.70	1.10	1.61	2.27	3.10	5.30
Surface inside Ra ≤ 0.8 µm									

**PRODUCTCODE:**

Group	TYPE	DN	Socket/ Groove nut*	Glass	Gasket	Variant
11	327	25	1: 1.4404	<b>1: Borosilicate glass (Boro) DIN 7080</b>	<b>1: PTFE</b>	Assigned by ACI if required
		32	2: 1.4301/7	3: Borosilicate glass DIN 7080	2: FKM	
		40		+ PTFE wiper	3: NBR	
		50		5: Borosilicate glass DIN 7080	5: Silicone	
		65		+ silicone wiper	6: EPDM	
		80			8: Special	
		100				
		125				
		150				

**INFO:** Unless otherwise stated, the factory standard highlighted is supplied.

\*Slot nut according to quotation / order actuation.

**ACCESSORIES:**

- Wiper SGW with PTFE or silicone wiper blade
- LED lights, for Ex- and Non-Ex-areas
- Mica protection

**EXAMPLE:**

**11-327-100-1-1-1-000** equivalent to:

ACI Type 327

DN 100

Socket out of 1.4404

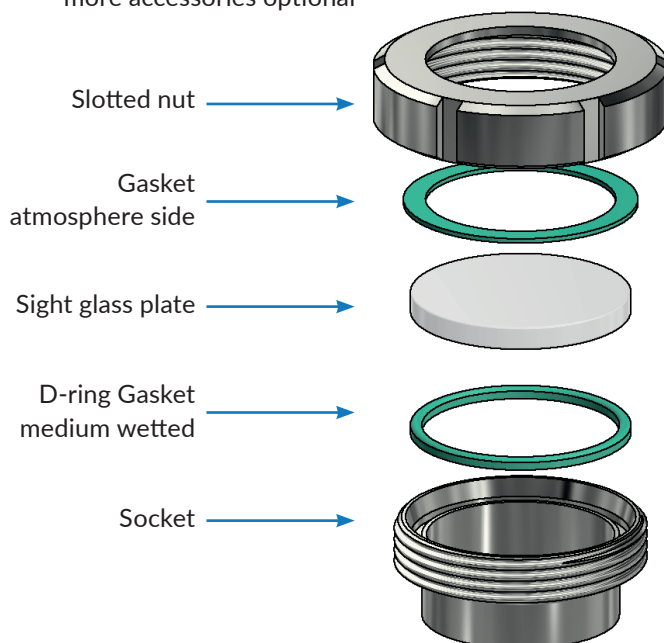
Groove nut out of 1.4404

Borosilicate glass DIN 7080

Gasket PTFE

**Standard design**

- more accessories optional


**RECOMMENDATION:**

For aggressive media or steam, mica discs should be used to protect the glass.

20220518

Technical changes and errors reserved!

