

Oval design with a 50 mm wide viewing window

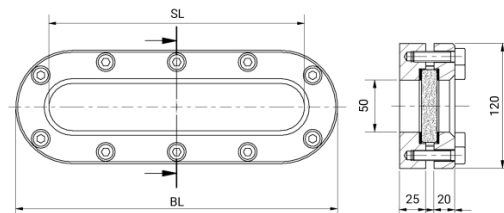
USAGE

Longitudinal sight glass fittings serve to observe and illuminate the interior of closed containers (boilers, tanks, silos, etc.). Sight glass fittings of type 338 are oval longitudinal sight glass fittings for welding in or onto, completed with a sight glass plate inserted and securely screwed between the gaskets.

INSTALLATION NOTE

After welding the base frame, it must be checked whether the sealing surface has warped. If necessary, it must be reworked! Please also observe the specified torque values for the bolting, in accordance with the operating and maintenance instructions! The working pressure does not apply to the base frame; this must be checked together with the pressure device according to AD2000 Leaflet B9!

DRAWING



Operational Condition

Temperature: (depending on glass and gasket)	≤ 280 °C	Borosilicate glass transparent similar to DIN 7081
	> 280 °C	upon request
Pressure:	≤ 16 barg	

Materials

Base frame:	1.4571; 1.4404
Glass:	Borosilicate glass transparent similar to DIN 7081
Gasket ¹⁾ :	PTFE; FKM; NBR; C4400; Silicone; EPDM; Graphite
Screws:	A2-70 / A4-70
Special materials on request	

1) See "INFO Gaskets"

BL [mm]	270	340	410	480	550	620
SL [mm]	200	270	340	410	480	550
Weight [kg]	7.2	9.0	10.9	12.7	14.5	16.3



Longitudinal sight glass fitting type 338 PN 16

For welding in or on

Type 338

PRODUCT CODE

Example for Explaining the Code Composition

11 - 338 - 480 - 2 - 1 - 4 - 000

GROUP	TYPE	LENGTH	BASE FRAME ¹	GLASS	GASKET	VARIANT
11	338	270	2) 1.4571	1) Borosilicate glass transparent similar to DIN 7081	1) PTFE	000) Standard
		340	3) 1.4404	6) Custom made design	2) FKM	
		410	8) Custom made design		3) NBR	
		480			4) C4400	
		550			5) Silicone	
		620			6) EPDM	
					7) Graphite	
					8) Custom made design	

1) Cover frame according to quote / order confirmation

Unless otherwise specified, the highlighted factory standard will be delivered.



EXAMPLE

The product code **11-338-480-2-1-4-000** corresponds to the standard version:

ACI type 338

480 mm long

PN 16

Base frame made of 1.4571

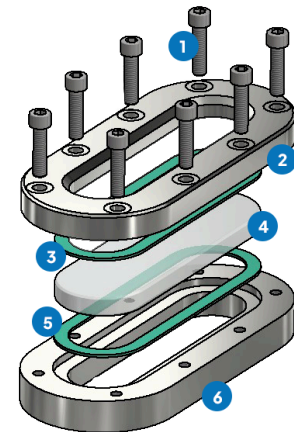
Cover frame made of 1.4571

Borosilicate glass transparent, similar to DIN 7081

Gasket KlingerSil® C4400

STRUCTURE

1. Screws
2. Cover frame
3. Glass cushion
4. Sight glass
5. Gasket
6. Base frame



For aggressive media, FEP or Halar® coated sight glass plates can be used. In case of steam, mica discs should be used to protect the glasses.



ACI
INDUSTRIEARMATUREN

Longitudinal sight glass fitting type 338 PN 16

For welding in or on

Type 338

QUICK OVERVIEW



max. 16 barg



heat resistant up to 280 °C



for liquid media



for gaseous media



face to face
270 - 620 mm



Custom made designs
possible



> 50 gasket materials



Accessories available

OPERATING CONDITIONS

TERMS OF SERVICE: Terms of service depend on the choice of glass and gaskets:

		VIEWING GLASS	GASKETS						
		Borosilicate glass transparent similar to DIN 7081	PTFE max. 200 °C	FKM max. 200 °C	NBR max. 80 °C	C4400 max. 175 °C	Silicone max. 180 °C	EPDM max. 130 °C	Graphite > 400 °C
TEMPERATURE	up to 80 °C	✓	✓	✓	✓	✓	✓	✓	✓
	up to 130 °C	✓	✓	✓	✗	✓	✓	✓	✓
	up to 150 °C	✓	✓	✓	✗	✓	✓	✗	✓
	up to 175 °C	✓	✓	✓	✗	✓	✓	✗	✓
	up to 200 °C	✓	✓	✓	✗	✗	✗	✗	✓
	up to 280 °C	✓	✗	✗	✗	✗	✗	✗	✓
	>280 °C	upon request	upon request						
PRESSURE	up to 16 barg	✓	✓	✓	✓	✓	✓	✓	✓

✓ suitable ✗ unsuitable

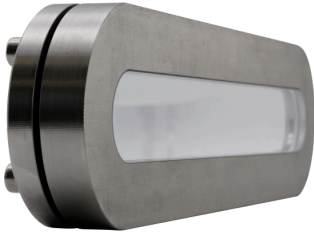


ACI
INDUSTRIEARMATUREN

**Longitudinal sight
glass fitting type 338
PN 16**
For welding in or on

**Type
338**

OPTIONAL ACCESSORIES



Nearly dead space-free design

> with Stepped glass



FEP protective screen / coating

> for high pH values

ACI Industriearmaturen GmbH

✉ info@aci24.com

🌐 www.aci24.com

📍 Königskamp 19 · 52428 Jülich · Germany

☎ +49 (0) 2461 91634 00

☎ +49 (0) 2461 91634 44

Continental Trade Sp. z o.o.

✉ biuro@continentaltrade.com.pl

🌐 www.continentaltrade.com.pl

📍 Stara 23 · 05-270 Nadma · Poland

☎ +48 22 670 11 81

