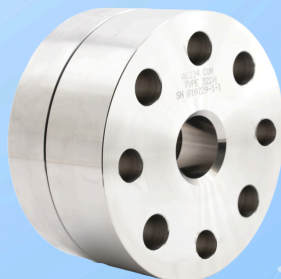




ACI
INDUSTRIEARMATUREN

Circular sight glass fitting type 322A Class 150/1500 lbs Flange mounting similar to DIN 28121 suitable for supporting flanges according to ASME B 16.5

Type 322A



USAGE

Container sight glasses of type 322A are suitable for mounting on existing flange carriers according to ASME B16.5. The sight glasses are factory pre-assembled and delivered ready for installation. The design, construction, and manufacture were carried out in accordance with the regulations AD 2000 and the PED 2014/68/EU.

Operating condition

Temperature: (depending on glass and gasket)	≤ 280 °C	Borosilicate glass (DIN 7080 or similar)
	≤ 300 °C	Borosilicate glass DIN 7080 mica protected
Pressure:	≤ 20 barg to 250 barg ¹	

1) Nominal pressure depending on the ANSI class rating

Materials

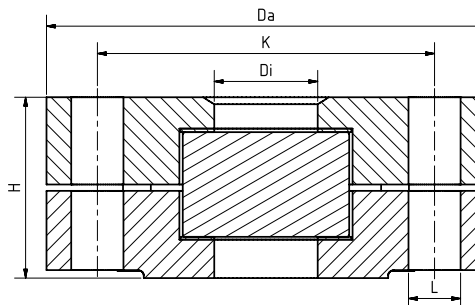
Base flange:	1.4571, 1.4404, 1.4541, 1.4539, 1.4462 ¹ , 2.4602 ¹
Glass:	Borosilicate glass DIN 7080 or similar
Gasket:	Graphite
Screws:	A2-70 / A4-70
Special materials on request	

1) Acceptance required according to EN 10204 - 3.2

INSTALLATION NOTE

Gaskets that match the sealing surfaces should be used. The screw material should be equivalent or of higher quality than the sight glass flanges. Generally, screws that match the drilling pattern should be used! If possible, the screw thread and the screw head should be lubricated.

DRAWING



NPS	1 ½"	2"	3"	4"
Di [mm]	40	50	80	100
H [mm]	Depending on the ANSI Class Rating and NPS			
Da [mm]	According to ASME B 16.5			
L [mm]				
K [mm]				
Other sizes available on request				



Circular sight glass fitting type 322A Class 150/1500 lbs Flange mounting similar to DIN 28121 suitable for supporting flanges according to ASME B 16.5

Type 322A

PRODUCT CODE

Example for Explaining the Code Composition

11 - 322A - 4 - 2 - 1 - 1 - 7 - 0

GROUP	TYPE	CLASS	NPS	BASE FLANGE ¹	GLASS	GASKET	VARIANT
11	322A	1) 150	1) 1 ½"	1) 1.4571	1) Borosilicate glass according to DIN 7080 etc.	7) Graphite	0) Standard
		2) 300	2) 2"	2) 1.4541			
		3) 400	3) 3"	3) 1.4404			
		4) 600	4) 4"	4) 1.4539	2) Borosilicate glass ² protected against mica		
		5) 900	5) larger	5) 2.4605			
		6) 1500		6) Special			
		7) higher					

1) Cover flange according to offer / order confirmation

2) Similar to DIN 7080



Unless otherwise stated, the highlighted factory standard will be delivered.

EXAMPLE

The product code **11-322A-4-2-1-1-7-0** corresponds to the standard version:

ACI Type 322A

NPS 2"

ANSI Class Rating 600 lbs

Base flange made of 1.4571

Cover flange made of 1.4571

Borosilicate glass similar to DIN 7080

Graphite gasket

STRUCTURE

1. Cover flange
2. Glass cushion
3. Sight glass
4. Gasket
5. Base flange
6. Screws



For aggressive media, FEP or Halar® coated sight glasses can be used. In case of steam, mica discs should be used to protect the glasses.



Circular sight glass fitting type 322A Class 150/1500 lbs Flange mounting similar to DIN 28121 suitable for supporting flanges according to ASME B 16.5

Type 322A

QUICK OVERVIEW



max. 250 barg



heat resistant up to 300
°C



for liquid media



for gaseous media



Nominal sizes
1 ½" - 4"



Custom made designs
possible



Accessories available

OPERATING CONDITIONS

Operating conditions depend on the choice of glass and the seals:

		Sight glass		Gasket
		Borosilicate glass similar to DIN 7080	Borosilicate glass similar to DIN 7080 + Mica protection disc	Graphite > 300 °C
PRESSURE TEMPERATURE	up to 280 °C	✓	✓	✓
	up to 300 °C	✗	✓	✓
	20 to 250 barg	✓	✓	✓



suitable



unsuitable



ACI
INDUSTRIEARMATUREN

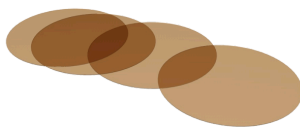
**Circular sight glass
fitting type 322A**
Class 150/1500 lbs
Flange mounting similar to
DIN 28121 suitable for
supporting flanges according
to ASME B 16.5

**Type
322A**

OPTIONAL ACCESSORIES



Double glazing



Round mica discs



Double glazing with heating cartridge

> up to 320 °C with Borosilicate glass
DIN 7080



LED lights

> for Ex and non-Ex areas

NOTE !



The pressure-temperature limits apply according to ASME B16.5!

Our tool with the same name is available on our website.
(www.aci24.com, under Service, sub-item Tools)



ACI Industriearmaturen GmbH

✉ info@aci24.com

🌐 www.aci24.com

📍 Königskamp 19 · 52428 Jülich · Germany

☎ +49 (0) 2461 91634 00

☎ +49 (0) 2461 91634 44

Continental Trade Sp. z o.o.

✉ biuro@continentaltrade.com.pl

🌐 www.continentaltrade.com.pl

📍 Stara 23 · 05-270 Nadma · Poland

☎ +48 22 670 11 81

