



Tubular sight glass type 650 PN 10

Welding connection DIN EN
10357, threaded and tapered
connection DIN 11851

Type 650



Weld connection according to DIN EN 10357
Thread connection according to DIN 11851
Socket connection according to DIN 11851

USAGE

For observing filling and flow in pipelines. The sight glass allows for reliable 360° monitoring of the function and performance of individual devices as well as whole systems. Tubular sight glasses of type 650 are suitable for installation in pipelines according to DIN 11851 at up to 10 barg working pressure. Aside from the connections, type 650 is free of dead space.

Operating condition

Temperature: (depending on glass and gasket)	≤ 130 °C (EPDM) ≤ 80 °C (NBR)
Pressure:	≤ 10 ¹ barg

1) Depending on the nominal width

Materials

Flange:	1.4301/7; 1.4404
Glass:	Borosilicate glass
Gasket:	NBR; EPDM

INSTALLATION NOTE

Pipe sight glasses must be installed in such a way that no pipe forces (tension, pressure, torsion), vibrations, or pressure shocks can affect the fitting.

IMPACT PROTECTION COVER (OPTIONAL)

The tube sight glasses type 650 are supplied exclusively with an impact protection cover. The impact protection cover is made of either perforated sheet metal or polycarbonate (up to approximately 120 °C short-term loadable).



**Tubular sight glass
type 650 PN 10**
Welding connection DIN EN
10357, threaded and tapered
connection DIN 11851

**Type
650**

DN	10	15	20	25	32	40	50	65	80	100	125	150
Ø 1 (Form A-D)	10	16	20	26	32	38	50	66	81	100	125	150
Ø 2 (Form D)	15	21	25	31	37	43	55	72	87	106	132	157
L (Form A-C)	122	122	124	142	154	164	168	191	209	257	270	290
L (Form D)	88	88	88	98	104	112	112	127	135	169	202	216
L1 (Form A-D)	60	60	60	70	70	70	70	85	85	115	160	170
Rd (Form A-C)	28 x 1/8"	34 x 1/8"	44 x 1/6"	52 x 1/6"	58 x 1/6"	65 x 1/6"	78 x 1/6"	95 x 1/6"	110 x 1/4"	130 x 1/4"	160 x 1/4"	190 x 1/4"
PS [barg]	10	10	10	10	10	10	10	10	9	8	7	7



ACI
INDUSTRIEARMATUREN

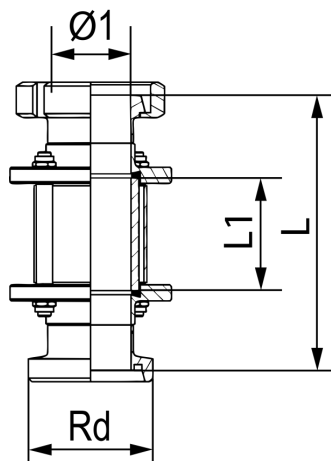
**Tubular sight glass
type 650 PN 10**
Welding connection DIN EN
10357, threaded and tapered
connection DIN 11851

**Type
650**

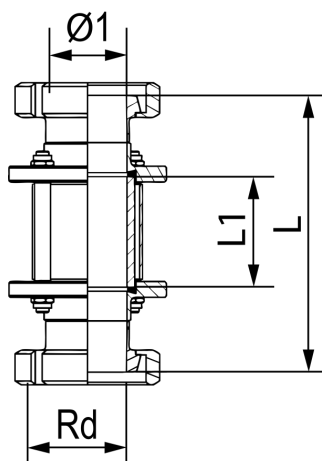
CONNECTIONS

The connections to the flanges can be made optionally with welding ends, double-sided threaded connections, double-sided tapered connections or combined with threaded and tapered connections.

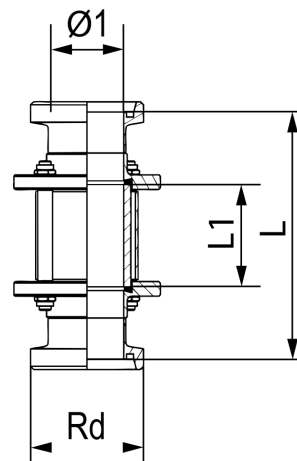
FORM A



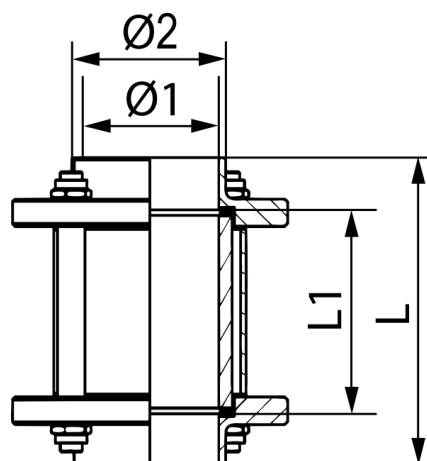
FORM C



FORM B



FORM D





Tubular sight glass type 650 PN 10

Welding connection DIN EN
10357, threaded and tapered
connection DIN 11851

Type 650

PRODUCT CODE

Example for Explaining the Code Composition

11 - 650 - A - 100 - 1 - 3 - 3 - 0

GROUP	TYPE	CONNECTION	NOMINAL SIZE	FLANGE	IMPACT PROTECTION	GASKET	VARIANT
11	650	A) Thread / Cone	DN 10	1) 1.4404	2) Perforated Sheet	3) NBR	0) Standard
		B) Thread / Thread	DN 15	2) 1.4301/7	3) Polycarbonate	6) EPDM	
		C) Cone / Cone	DN 20				
		D) Welded Ends	DN 25				
			DN 32				
			DN 40				
			DN 50				
			DN 65				
			DN 80				
			DN 100				
			DN 125				
			DN 150				

EXAMPLE

The product code 11-650-A-100-1-1-3-0

corresponds to the standard version:

ACI Type 650

Form A

DN 100

PS max. 8 barg

Flange 1.4404

with impact protection made of

polycarbonate

Gasket NBR



ACI
INDUSTRIEARMATUREN

Tubular sight glass type 650 PN 10

Welding connection DIN EN
10357, threaded and tapered
connection DIN 11851

Type 650

QUICK OVERVIEW



max. 10 barg



heat resistant up to 130
°C



for liquid media



for gaseous media



Nominal sizes
DN 10 - 150

OPERATING CONDITIONS

Operating conditions depend on the choice of glass and seals:

		Sight glass	Gaskets	
		Borosilicate glass 3.3	NBR max. 80 °C	EPDM max. 130 °C
PRESSURE TEMPERATURE	up to 80 °C	✓	✓	✓
	up to 130 °C	✓	✗	✓
	up to 10 barg	✓	✓	✓

✓ suitable ✗ unsuitable

ACI Industriearmaturen GmbH

✉ info@aci24.com

🌐 www.aci24.com

📍 Königskamp 19 · 52428 Jülich · Germany

☎ +49 (0) 2461 91634 00

📞 +49 (0) 2461 91634 44

Continental Trade Sp. z o.o.

✉ biuro@continentaltrade.com.pl

🌐 www.continentaltrade.com.pl

📍 Stara 23 · 05-270 Nadma · Poland

☎ +48 22 670 11 81

📞 -