

 	<h1>Round Sight glass</h1> <p><b>PN 2.5, vacuum version</b> For welding, similar to DIN 28120</p>	<h1>Type 318V</h1>
--	---	--------------------

### Application:

Observation and illumination of the interior of enclosed vessels (boilers, tanks, silos etc.).

Sight glasses consist of round flange mountings to be welded into or onto a vessel, completed by a sight glass plate with appropriate seals.

An O-Ring seal makes type 318V perfectly capable of vacuum applications.

**Similar to DIN 28120**

Light Construction

Operating pressure  
-1 to +2.5 bar

Vacuum capable

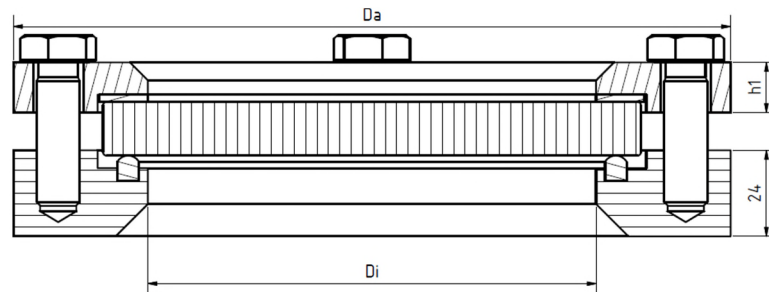
### Operating conditions:

Temperature: (depending on glass)	150	°C
	280	°C
pressure:	-1	Bar
	to 2.5	Bar

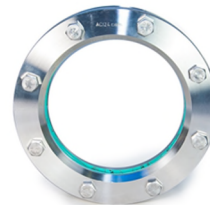
### Materials:

Flange:	1.4571 (base flange)
	1.4541 (cover flange)
glass:	Borosilicate glass DIN 7080 Soda lime glass DIN 8902
seal	O-Ring acc. To requirements
bolts:	A4-70

Other materials on request



DN	50	80	100	125
Da	150	175	200	220
Di	80	100	125	150
h1	12	14	14	16
kg	3,8	5,2	6,1	7,2
Nm	37	52	63	44



### Installation guideline:



After welding the base flange onto/into the pressure vessel, the sealing surface must be checked for deformations! Reworking may be required! Observe the listed torque values for remounting the cover flange!

The pressure rating does not consider the base flange. This will have to be audited together with the pressure vessel according to AD 2000 instructions B9 or equivalent standard!

Technical changes and errors reserved!

ACI Industriearmaturen GmbH • [www.aci24.com](http://www.aci24.com)  
Version 2016-10-12

Contact in Poland:  
Continental Trade Sp. z o.o.  
[www.continentaltrade.com.pl](http://www.continentaltrade.com.pl)  
[office@continentaltrade.com.pl](mailto:office@continentaltrade.com.pl)

 	<h1>Round Sight glass</h1> <h2>PN 2.5, vacuum version</h2> <p>For welding, similar to DIN 28120</p>	<h1>Type 318V</h1>
--	---	------------------------

Product code:

		DN	Flange	Glass	Dichtung	Varianten
11	318V	Acc. To table	1: 1.4541 / 1.4571 2: 1.0345	1: Borosilicate 2: Soda Lime 3: Quartz 4: BS + PTFE Wiper 5: BS + Sil. Wiper 6: SL + PTFE-Wischer 7: SL + Sil.-Wischer	1: PTFE 2: FKM 3: NBR 5: Silikon 6: EPDM 8: Sonder	Von ACI bei Bedarf vergeben (z.B. Sonder-Konstruktion)

## Options

- a) Wiper
- b) LED or Halogen Light (ATEX certificate possible)
- c) High temperature service (with Quartz glass)
- d) Other special constructions on request

**ACI Type 318V**  
 DN100  
 Flange 1.4571 / 1.4541  
 Borosilicate glass  
 Seal PTFE  
 Standard construction

Example: 11-318V-100-1-1-1-00

**Recommendation:**  
 For corrosive media or steam, we recommend adding a mica disk to protect the glass!

Technical changes and errors reserved!