

APPLICATION:

Observation and illumination of the interior of closed vessels (boilers, tanks, silos, etc.). Manhole sightglasses can be used like a blind-flange to close manholes and at the same time have a pressure-resistant sight-glass fitting for visual observation even when the manhole is closed.

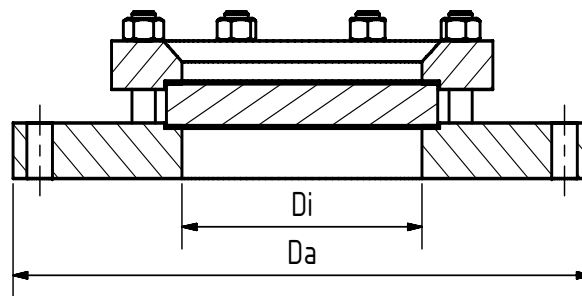
INSTALLATION NOTE:

Gaskets suitable for the sealing surfaces should be used. The screw material should be equivalent to or higher than those of the sight glass body. Always use screws that match the hole pattern. If possible, the screw thread and the screw head should be lubricated.

**For covering access and inspection openings
($\Delta P \leq 6 / 10 / 16$ bar)**

Operating conditions:

Temperature: (depending on glass and gasket)	150 °C 280 °C
Pressure:	$\leq 6 / 10 / 16$ Bar



Materials:

Flange:	1.4571, 1.4541, 1.4404, 1.4539, P265GH
Glass:	Borosilicate glass DIN 7080 Soda lime glass DIN 8902
Gasket:	PTFE; FKM; NBR; C4400; Silicone; EPDM; Graphite
Screws:	A4/70
Special materials on request	

DN

DN 300 up to 800

Di	On request
Da	According to DIN EN 1092-1 PN 6 / 10 / 16
Other sizes on request	



Manhole sight glass fitting PN 6 / 10 / 16

Flange mounting according to DIN EN 1092-1

Type 325

PRODUCTCODE:

Group	TYPE	PN	DN	Base-flange*	Glass	Gasket	Variant
11	325	1: 6	300	1: 1.4539	1: Borosilicate glass (Boro) DIN 7080	1: PTFE	Assigned by ACI if required
		2: 10	350	2: 1.4571	2: Soda lime glass (SLG) DIN 8902	2: FKM	
		3: 16	400	3: 1.4404	3: Quartz glass	3: NBR	
		4: higher	450	4: 1.4541	4: Boro + PTFE wiper	4: C4400	
			500	6: 1.4306	5: Boro + silicone wiper	5: Silicone	
		600	7: P265GH	6: SLG + PTFE wiper	6: EPDM		
		700	8: Special	7: SLG + silicone wiper	7: Graphite		
		800	8: Borosilicate glass untempered	8: Special			

INFO: Unless otherwise stated, the factory standard highlighted is supplied.

*Cover flange according to quotation / order confirmation.

SPECIAL DESIGNS/OPTIONS:

- a) Wiper SWI or SWII with PTFE or silicone wiper blade
- b) Spraying device SVI
- c) LED or halogen lights, ATEX-certified, EX
- d) High temperature version with quartz glass or Boro untempered up to 400°C, higher on request
- e) O-ring seal (suitable for vacuum)¹
- f) FEP protective screen
- g) Plexiglas impact protection (5 mm)
- h) Grid impact protection
- i) double glazing

¹ depending on environmental variables

EXAMPLE:

11-2-325-600-2-1-7-0 equals the product code:

ACI Type 325
PN10
DN600
flanges 1.4571
borosilikate glass
gasket graphite
standard version

ATTENTION!

The pressure-temperature limits according to DIN EN 1092-1 apply!

Our tool of the same name is available on our website for this purpose.

(www.ACI24.com, in the category Service, Tools)



RECOMMENDATION:

For aggressive media or steam, mica discs should be used to protect the glass.

Kontakt w Niemczech
ACI Industriearmaturen GmbH
Tel. +49 (0) 2403 748 850
info@aci24.com • www.aci24.com

Kontakt w Polsce:
Continental Trade Sp. z o.o.
tel. +48 22 670 11 81
office@continentaltrade.com.pl
<http://continentaltrade.com.pl>

20200210

Technical changes and errors reserved!