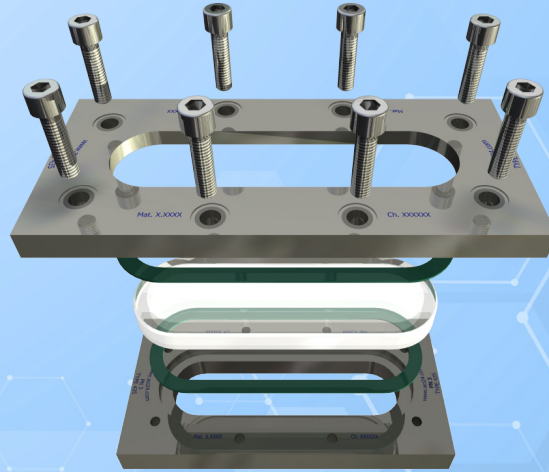


# Rectangular sight glass PN 3

for welding in or on, wide visibility

# Type 435



### APPLICATION:

Observation and illumination of the liquid level inside closed vessels (boilers, tanks, silos, etc.).

These sightglasses are angular flange sockets for welding in or on, each completed with a firmly screwed sightglass plate inserted between the seals.

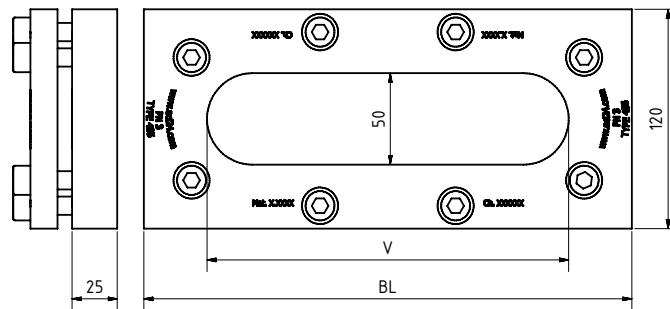
### INSTALLATION NOTE:

After the base frame has been welded in, check whether the sealing surfaces have warped! If necessary, rework must be performed! Please also observe the specified torques for the screw connection! The operating pressure does not apply to the base frame, which must be checked together with the pressure device according to AD data sheet B9!

**Lightweight version with  
50 mm vision panel  
( $\Delta P \leq 3$  bar)**

### Operating conditions:

Temperature: (depending on glass and gasket)	100 °C 243 °C
Pressure:	$\leq 3$ Bar



### Materials:

Flange:	1.4571, 1.4404, P265GH
Glass:	Borosilicate glass similar to DIN 7081
Gasket:	PTFE; FKM; NBR; C4400; Silicone; EPDM; Graphite
Screws:	A4-70
Special materials on request	

BL	SL	Kg	Tightening torque <sup>1</sup> (Nm)
270	200	8,14	13 ... 34 <sup>1</sup>
340	270	9,12	13 ... 34 <sup>1</sup>
410	340	11,3	13 ... 34 <sup>1</sup>
480	410	12,9	13 ... 34 <sup>1</sup>
550	480	13,8	13 ... 34 <sup>1</sup>
620	550	16,9	13 ... 34 <sup>1</sup>
690	620	17,7	13 ... 34 <sup>1</sup>
760	690	18,9	13 ... 34 <sup>1</sup>

<sup>1</sup> graphite gasket



# Rectangular sight glass PN 3

for welding in or on, wide visibility

# Typ 435

## PRODUCTCODE:

Group	TYPE	ovr. length	Base frame*	Glass	Gasket	Variant
11	435	270 340 410 480 550 620 690 760	2: 1.4571 3: 1.4404 7: Duplex 8: Special	1: Borosilicate glass (Boro) similar to DIN 7081 6: Special	1: PTFE 2: FKM 3: NBR 4: C4400 5: Silicone 6: EPDM 7: Graphite 8: Special	Assigned by ACI if required

**INFO:** Unless otherwise stated, the factory standard highlighted is supplied.

\*Cover frame according to quotation / order confirmation.

## SPECIAL DESIGNS/OPTIONS:

- a) High temperature version on request
- b) LED or halogen lights, ATEX-certified, EX
- c) Other options on request

## EXAMPLE:

**11-435-480-2-1-7-000 equals the product code:**

ACI Typ 435  
480 mm long  
Base frame 1.4571  
Borosilicate glass  
gasket graphite  
standard version

## RECOMMENDATION:

For aggressive media or steam, mica discs should be used to protect the glass.

Contact in Germany:  
ACI Industriearmaturen GmbH  
Tel. +49 (0) 2403 748 850  
info@aci24.com • www.aci24.com

Contact in Poland:  
Continental Trade Sp. z o.o.  
office@continentaltrade.com.pl  
http://continentaltrade.com.pl

20190906

Technical changes and errors reserved!