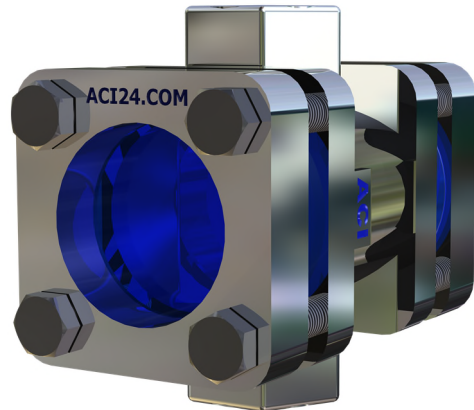


### Application:

Visual observation of flow and filling in piping. The sight glasses allow a reliable survey of function and performance in single devices or complete plants.



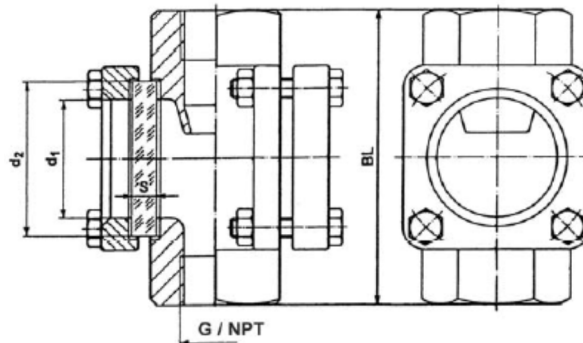
### Operating conditions:

pressure:	PN16 PN25 PN40
Temperature:	150°C (DIN 8902) 280°C (DIN 7080)
Installation direction:	optional
Connection:	BSP (G) or NPT

### Materials:

Body	GG25 GS-C 25 1.4408
Glass:	Borosilicate glass DIN 7080 Soda lime glass DIN 8902
gasket:	PTFE (200°C) FKM (200°C) NBR (100°C) C4400 (150°C) silicone (200°C) EPDM (140°C) Graphite (280°C)

Other materials on request



Size	1/4	3/8	1/2	3/4	1	1 1/4	1 1/2	2
BL	100	100	100	120	120	160	160	230 180 (GG)
d1	32	32	32	48	48	65	65	80

NPT thread **only available** in GS-C 25 or 1.4408

