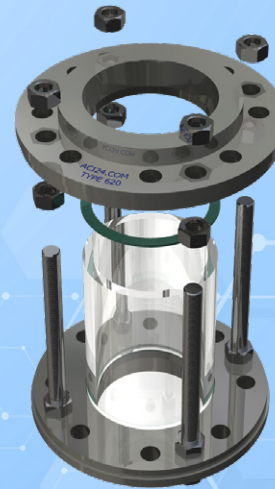
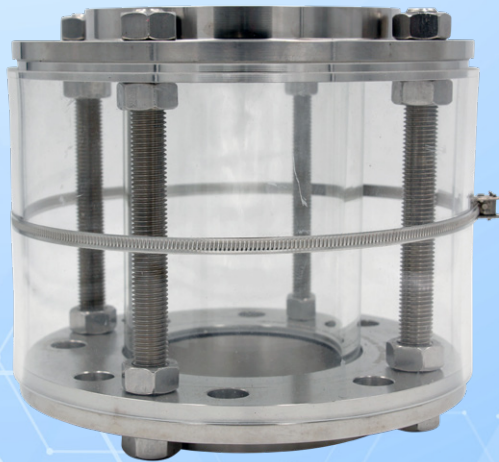


Tubular sight glass CLASS 150

with flange connections to DIN ASME 16.5 B

Type 620A



APPLICATION:

For observation of filling and flow in pipelines. The sight glass provides reliable 360° monitoring of the function and performance of individual devices as well as entire systems.

The tubular sight glass type 620A is suitable for ASME 16.5 B with flanges on both sides.

INSTALLATION NOTE:

Gaskets suitable for the sealing surfaces should be used. The screw material should be equivalent to or higher than those of the sight glass body. Always use screws that match the hole pattern. If possible, the screw thread and the screw head should be lubricated. Tubular sight glasses must be installed in such a way to prevent pipe forces (tension, pressure and torsion), vibrations and pressure shocks from affecting the fitting!

With flange connections according to DIN ASME 16. B ($\Delta P \leq 16$ bar)

Operating conditions:

Temperature: (depending on glass and gasket)	300 °C	
Pressure:	$\leq 16^1$	Bar

PERMISSIBLE OPERATING PRESSURE:

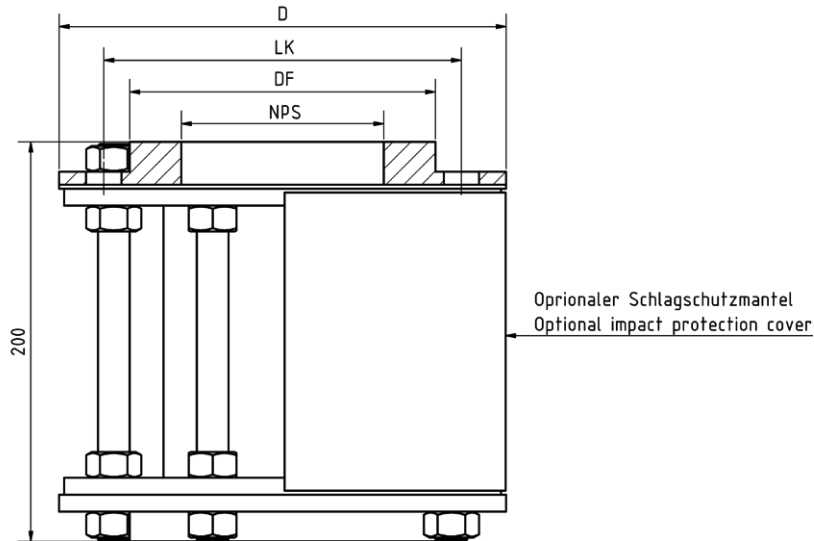
The permissible operating pressure is depending on the nominal size and must always be observed! The pressure and nominal size assignment on the next page must be observed. Higher pressures are possible on request. Please contact us if necessary.

Materials:

Flange:	P265GH, 1.0425, 1.4571
Glass tube:	Borosilicate glass
Gasket:	PTFE; FKM; NBR; C4400; Silicone; EPDM; Graphite
Screws:	A4-70
Special materials on request	

IMPACT PROTECTION COVER (OPTIONAL):

As an option, our tubular sight glasses type 620 can be equipped with an elastic impact protection jacket to protect the glass tube. Due to the new plastic material manufactured for ACI, it is considerably more resistant to UV radiation, impact and ageing than the previous Plexiglas version.



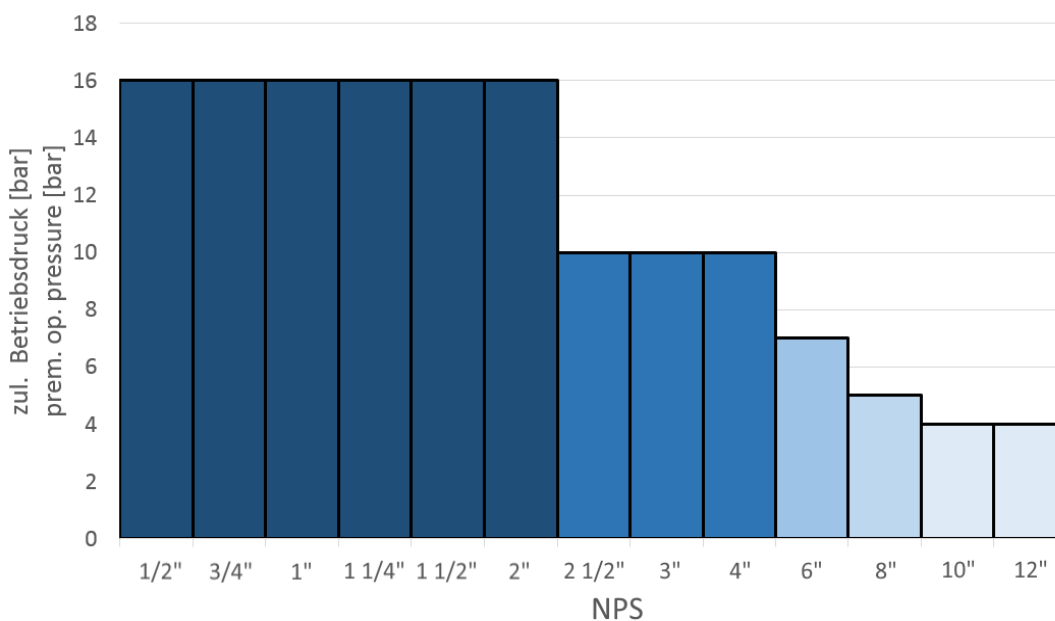
NPS	1/2"	3/4"	1"	1 1/4"	1 1/2"	2"	2 1/2"	3"	4"	6"	8"	10" ²	12" ²
LK	60	70	79	89	98	121	140	152	190	241	298	362	432
DF	35	43	51	63	73	92	105	127	157	216	270	324	381
D	95	105	115	140	150	165	185	200	230	285	345	405	485

Number of holes and diameter according to ASME 16.5 B

² Special design only on prior request Other sizes, overall lengths and flange standards on request

ATTENTION!

Observe permissible operating pressure!





Tubular sight glass CLASS 150

with flange connections to DIN ASME 16.5 B

Type 620A

PRODUCTCODE:

Group	TYPE	DN	Flange	Gasket	Impact protection	Iverall length
11	620A	1: 1/2" 2: 3/4" 3: 1" 4: 1 1/4" 5: 1 1/2" 6: 2" 7: 2 1/2" 8: 3" 9: 4" 10: 6" 11: 8" 12: 10" 13: 12" 14: Special	1: P265 / 1.0425 2: 1.4571 3: Special	1: PTFE 2: FKM 3: NBR 4: C4400 5: Silicone 6: EPDM 7: Graphite 8: Special	0: without impact protection 1: with impact protection	000: Standard (200 mm)

INFO: Unless otherwise stated, the factory standard highlighted is supplied.

SPECIAL DESIGNS/OPTIONS:

- a) Impact protection cover
- b) additional inlet chamfer for special pipelines
- c) Additional options on request

EXAMPLE:

11-620A-10-2-4-1-000 equals the product code:

ACI Type 620A
NPS 6"
flange 1.4571
gasket C4400
with impact protection jacket
standard length 200 mm

HIGHER OPERATING PRESSURES:

In individual cases, higher operating pressures than those specified may be possible. Please contact us if necessary.

Contact in Germany:
ACI Industriearmaturen GmbH
Tel. +49 (0) 2403 748 850
info@aci24.com • www.aci24.com

Contact in Poland:
Continental Trade Sp. z o.o.
office@continentaltrade.com.pl
http://continentaltrade.com.pl

20190916

Technical changes and errors reserved!