



# Tubular sight glass PN 16

for up to 16 bar pressure with 360° panoramic view

# Type 670



### APPLICATION:

For observation of filling and flow in pipe-lines. The sight glass provides reliable 360° monitoring of the function and performance of individual devices as well as entire systems.

Tubular sight glasses type 670 are suitable for installation between flanges according to DIN 1092-1 PN16. The sight glass is free of dead space when mounted properly.

### INSTALLATION NOTE:

The flange bolting is taken into account and required for design tightness. Gaskets suitable for the sealing surfaces should be used. The screw material should be equivalent to or higher than those of the sight glass body. If possible, the screw thread and the screw head should be lubricated. Tubular sight glasses must be installed in such a way to prevent pipe forces (tension, pressure and torsion), vibrations and pressure shocks from affecting the fitting!

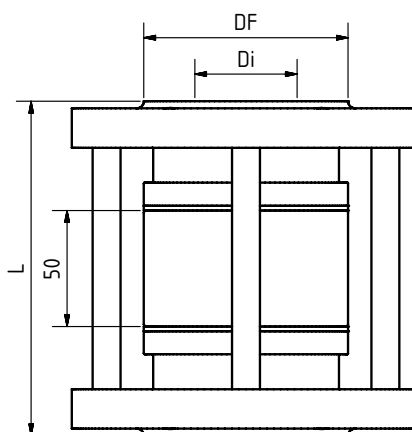
**With flange connections according to DIN 1092-1 ( $\Delta P \leq 16$  bar)**

### Operating conditions:

Temperature:	300 °C Borosilicate glass 400 °C Boro untempered 1000 °C Quarzt glass
--------------	---

Pressure:	$\leq 16^1$	Bar
-----------	-------------	-----

<sup>1</sup> in combination with Borosilicate glass  
Higher see Type 671



### Materials:

Flange:	1.4571
Glass tube:	Borosilicate glass Quartz glass
Gasket:	PTFE; FKM; NBR; C4400; Silicone; EPDM; Graphite
Screws:	A4-70
Special materials on request	

DN	10	15	20	25	32	40	50	65	80	100	125	150	200
Di	13	18	22	29	38	44	55	71	83	108	132	160	208
DF	40	45	58	68	78	88	102	122	138	158	188	212	268
L <sup>2</sup>	134	134	134	134	144	144	146	148	148	158	158	164	164
Kg	1	3	3,5	4	6	7	9	11	13	15	19	24	33
PN	16	16	16	16	16	16	16	16	16	16	16	16	16

Outer diameter, bolt circle and holes according to DIN 1092-1 PN16

<sup>2</sup> Optionally also available in lengths according to DIN 558-1



# Tubular sight glass PN 16

with flange connections to DIN 1092-1 / (2633)

# Type 670

## PRODUCTCODE:

Group	TYPE	DN	Flange	Glass tube	Gasket	Variants
11	670	1: 10 2: 15 3: 20 4: 25 5: 32 6: 40 7: 50 8: 65 9: 80 10: 100 11: 125 12: 150 16: Special	<b>1: 1.4571</b> <b>8: Special</b>	<b>1: Borosilicate glass</b> 2: Quartz glass 3: Boro untempered 4: Special	1: PTFE 2: FKM 3: NBR 4: C4400 5: Silicone 6: EPDM <b>7: Graphite</b> 8: Special	Assigned by ACI if required

**INFO:** Unless otherwise stated, the factory standard highlighted is supplied.

### SPECIAL DESIGNS/OPTIONS:

- a) High pressure version (Type 671 PN 25 / 40)
- b) ASME 16 B variant
- c) High temperature version up to 1000°C
- d) Additional options on request

### EXAMPLE:

**11-670-10-1-1-7-000 equals the product code:**

ACI Type 670  
DN100  
flanges 1.4571  
borosilicate glass  
standard version

### ATTENTION!

The pressure-temperature limits according to DIN EN 1092-1 apply!

Our tool of the same name is available on our website for this purpose.  
([www.ACI24.com](http://www.ACI24.com), in the category Service, Tools)



### HIGHER OPERATING PRESSURES:

In individual cases, higher operating pressures than those specified may be possible. Please contact us if necessary.

Kontakt w Niemczech  
ACI Industriearmaturen GmbH  
Tel. +49 (0) 2403 748 850  
[info@aci24.com](mailto:info@aci24.com) • [www.aci24.com](http://www.aci24.com)

Kontakt w Polsce:  
Continental Trade Sp. z o.o.  
tel. +48 22 670 11 81  
[office@continentaltrade.com.pl](mailto:office@continentaltrade.com.pl)  
<http://continentaltrade.com.pl>

20200210

Technical changes and errors reserved!